



2017 IMPACT REPORT

CARING FOR CHILDREN

WITH CANCER AND BLOOD DISORDERS





THIS IS HOW WE
MEASURE SUCCESS:
— is it —
**GOOD FOR
THE KIDS?**



Dear Friends:

As The Valerie Fund embarks on its next 40 years you'll see that 2017 was yet another incredible year of expanding on our mission and impacting more children and families touched by cancer and blood disorders. Last year was the eighth consecutive year of program growth within our network of centers, Camp Happy Times and our scholarship program. With our amazing, new center at St. Joseph's Children's Hospital on-board for the full year, our program support reached almost \$4 million for the first time in our history. Over \$2.8 million of that support went directly to our seven Valerie Fund Children's Centers, almost \$400,000 in funding went to our summer camp miracle called Camp Happy Times and over \$775,000 to our other pediatric hematology/oncology programs, including our Valerie Fund Scholarship Program, which awarded over \$390,000 to 90 Valerie Fund patients looking to further their education attending medical schools, graduate programs, universities and community colleges throughout the United States.

In 2017 we publicly announced our Green Light Initiative which is the most important project in our history and will help us to expand on

The Valerie Fund's future. Completion of this \$7 million campaign goal will allow us to keep improving the renowned care and expand the crucial programs that thousands of our children and families deserve. Join us in this first ever Valerie Fund campaign that you can read much more about on the following pages.

Our children and families remain in the forefront of everything The Valerie Fund does. We hope this 2017 Impact Report strengthens your knowledge of all the programs and services The Valerie Fund makes possible. We know you are the backbone of making this all possible and it doesn't happen without your support. We want to thank you for your commitment to all things Valerie Fund. You are the lifeblood of all we do and you help us have the greatest impact on over 6,000 children each and every year!



Sincerely,

Dominic DiBari
Chair

Barry Kirschner
Executive Director



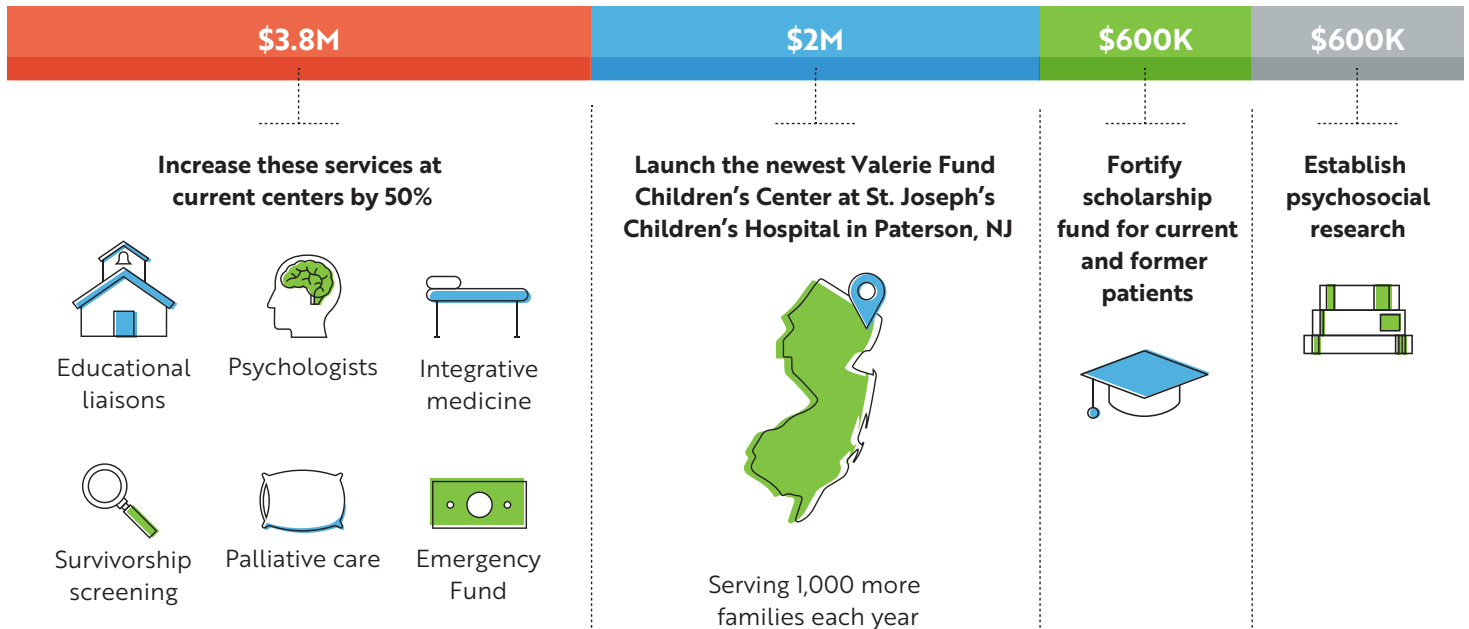
The Valerie Fund

GREEN LIGHT
INITIATIVE



THE GREEN LIGHT INITIATIVE... GO FORWARD

\$7 million



ONE OF THE BIGGEST MOMENTS OF 2017 came toward the end of the year, when The Valerie Fund publicly introduced our Green Light Initiative. An enthusiastic crowd, gathered for our annual Thanksgiving Ball Gala in November, learned details of this groundbreaking initiative, which marks a major new milestone in expanding our renowned care and extending our services to thousands more children and their families.

At its heart, the Green Light Initiative recognizes that a diagnosis of cancer or a blood disorder can be a "red light," a hard stop in a busy, active young life. Turning that light green and improving every mile of this difficult journey with Valerie Fund kids and their families is what this initiative is all about. Young lives in motion suddenly brought to a hard stop is a call to action and donors can imagine themselves making a tangible difference turning the red lights of cancer to green.

The Green Light Initiative is a \$7 million-dollar campaign with three major components. First, we will increase services at our current centers by 50 percent. These services include educational liaisons,

psychologists, integrative medicine programs, late effects follow-up meetings and screenings, palliative care, and an emergency fund. In addition, the initiative allows us to support the newest Valerie Fund Center at St. Joseph's Children's Hospital in Paterson, NJ, where we serve 1,000 more families each year. It will also help strengthen our commitment to education and learning by bolstering the scholarship fund for current and former patients, while also establishing psychosocial research.

The campaign's targeted fundraising effort will allow The Valerie Fund to spread the impact of expanded care and services to many additional deserving children. Patients and their families will receive more support and interventions at the same centers with the same care teams where they are being treated now.

In keeping with our mission, and everything we've done for more than 40 years, the Green Light Initiative is *all about the kids*. As we pick up speed in this exciting new chapter in our story, we invite you to learn more... and hope you will support the Initiative and join us for the ride!

2017 HIGHLIGHTS

THE NEW VALERIE FUND CENTER AT ST. JOSEPH'S CHILDREN'S HOSPITAL

The Valerie Fund officially opened its newest children's center at St. Joseph's Children's Hospital in Paterson, NJ in July of 2016. We saw this as a wonderful opportunity to expand the scope of psychosocial care available to thousands of pediatric patients and families in northern New Jersey being treated for cancer and blood disorders.

The Valerie Fund's financial support of the St. Joseph's Center allowed for the creation of new programs that aligned with both organizations' philosophy that there is more to the successful treatment of pediatric hematology and oncology than medicine alone. Gaps in essential programming have now been closed by The Valerie Fund's support of a new educational liaison, psychologist and financial counselor.

According to Dr. Jill Menell, Chief of Pediatric Hematology/Oncology at St. Joseph's, the impact of these new hires "will ensure that the diseases the patients have and treatments they receive will not limit their success in school and in life." The Valerie Fund Center now also has expanded social work and child life programs and the positive effects are resonating with staff and patients. These five psychosocial clinicians work as a team to treat the child as well as the entire family from diagnosis to school re-entry and address any psychological or financial issues that may arise.

INTEGRATIVE MEDICINE EXPANDED AT NEWARK BETH ISRAEL

In 2017 The Valerie Fund approved a grant request to expand the successful but part-time Integrative Medicine Program at our Newark Beth Israel Center. Now both patients and their families will have much needed, full time access to massage, Reiki, aromatherapy, meditation, relaxation techniques, guided imagery and yoga, which allow patients to achieve a state of physical, mental and social well-being while they are undergoing treatment. Parents are also taught acupressure techniques so they can help their children manage pain and nausea when they are at home.

Integrative Medicine is a relatively new program incorporated into the care of pediatric hematology and oncology patients but it is a vital part of relieving pain, anxiety and nausea in all of our young patients fighting a multitude of diseases. In doing so, the patient's immediate health needs as well as the effects of the long-term and complex interplay between biological, behavioral, psychosocial and environmental influences are taken into account.

Our sickle cell population will now benefit greatly from access to full-time integrative medicine. The Valerie Fund Center at Newark Beth Israel has the largest sickle cell program in the state. As sickle cell patients routinely experience pain crises during seasonal weather swings, the integrative medicine clinicians will now be able to work more closely with these children to mitigate pain, reduce stress and provide techniques for a more relaxing environment.





THIS IS HOW WE
MEASURE SUCCESS:
— is it —
**GOOD FOR
THE KIDS?**

PEDIATRIC ONCOLOGY LONG TERM FOLLOW-UP PROGRAM

Today, the overall five-year survival rate for children's cancer has increased to over 80% thanks to remarkable advances in treatment. The dramatic growth in survivorship has created a community that may face unique health and psychological challenges as they age; challenges referred to as the "late effects" of disease and its treatment. Common late effects include cardiac problems, learning disabilities, growth and fertility issues, psychological dysfunction and second malignancies. The LTFU (Long Term Follow Up) Program has existed at our Morristown Medical Center and Overlook Hospital Centers since 2013 to address the medical and quality-of-life issues of childhood cancer survivors through a comprehensive health evaluation, a psychosocial assessment and targeted specialty referrals. The program also helps survivors with educational, vocational and insurance challenges.

The Long Term Follow-Up Program provides pediatric and young adult cancer survivors with a complete evaluation that includes:

- A review of each survivor's medical history and recommendations for long term follow up
- Up-to-date information and resources for survivors and their families
- Referrals to support groups for survivors
- Transitioning patients from pediatric to adult care programs
- Participation in childhood cancer research studies

The number of survivors seen at the LTFU Program at Morristown has more than doubled over recent years and in 2017 The Valerie Fund Center requested a full time social worker with survivorship training to work with Maureen Baker, APN, to complement this program and provide better care for this growing pediatric population. The Valerie Fund Board of Trustees was excited to approve this large grant request knowing that these funds would only make this very valuable program even stronger for our kids and their families.



CARING, LEARNING, BUILDING, GROWING, LEADING

THE VALERIE FUND BRINGS EDUCATION TECHNOLOGY TO NEW YORK PATIENTS

Rasheed has lived with Sickle Cell Disease since birth and he's had to face many challenges in his young life. The support he receives from Caitlin McCaffrey, Educational Liaison at The Valerie Fund Center at NY-Presbyterian Columbia University Medical Center, helps ease the worry about falling behind during extended absences from school. This year McCaffrey took on the New York City Department of Education and her advocacy, joined with the power of technology, has been transformative for Rasheed. A four-foot robot provided by The Valerie Fund has put the middle schooler "back in the classroom" after having to leave midway through 7th grade to recover from a bone marrow transplant last April.

The robot's face is the size of a small iPad and on most school days, Rasheed's inquisitive eyes and huge smile fill up the screen.



The Valerie Fund patient Rasheed attends 8th grade through his VGo

The 8th grader is operating the robot, appropriately named VGo, virtually from his computer at home. Rasheed can see and communicate with his teachers and classmates in real time and they all can interact with him. He is able to attend school remotely because VGo brings him into the classroom, sits with his friends at the lunch table and even seamlessly maneuvers through throngs of students in the hallways.

"I believe that once a child begins school, it quickly becomes the center of his/her life. School provides a sense of consistency and fosters educational, social and emotional development. The Valerie Fund recognizes the importance of helping children stay involved with school."

— **Kaitlin Murtagh,**
Outpatient Education Coordinator, Children's Hospital of Philadelphia Voorhees Specialty Care Center

It was the enthusiasm of Educational Liaison Joann Spera three years earlier that brought the idea of buying these VGo robots to The Valerie Fund. She understood the tremendous potential the robots had for meeting the needs of children with chronic illnesses and allowing them to remain active members of their school communities.

During long periods of treatment, patients' susceptibility to infection and weakened immune systems may preclude them from physically attending school. Post-transplant, while his body healed, Rasheed was provided home instruction for his primary subjects—math, science, social studies and English but he was unable to stay current with his special classes in the gifted and talent STEM program. Once paired with a VGo, he was able to keep up with his peers in French and theatre class.

With so much at stake, educational liaisons play a key role in meeting the unique educational needs of every patient. They

understand the importance of supporting the patients' classroom teachers and educating classmates about why their friend needs to remain home for long periods of time. The goal is to ensure the children do not feel isolated and to create a learning environment that allows them to feel confident and thrive when re-entering their classroom. In May 2013 the first educational liaison position was filled at The Valerie Fund Center at Morristown Medical Center by Joann Spera. Today there are a total of five educational liaisons across The Valerie Fund psychosocial teams. There are also two dozen VGo's available that have been "enrolled" in over 60 schools in New Jersey and NYC to date.



A MODEL OF COMPREHENSIVE HEALTHCARE SERVICES



THIS IS HOW WE
MEASURE SUCCESS:
Is It
**GOOD FOR
THE KIDS?**

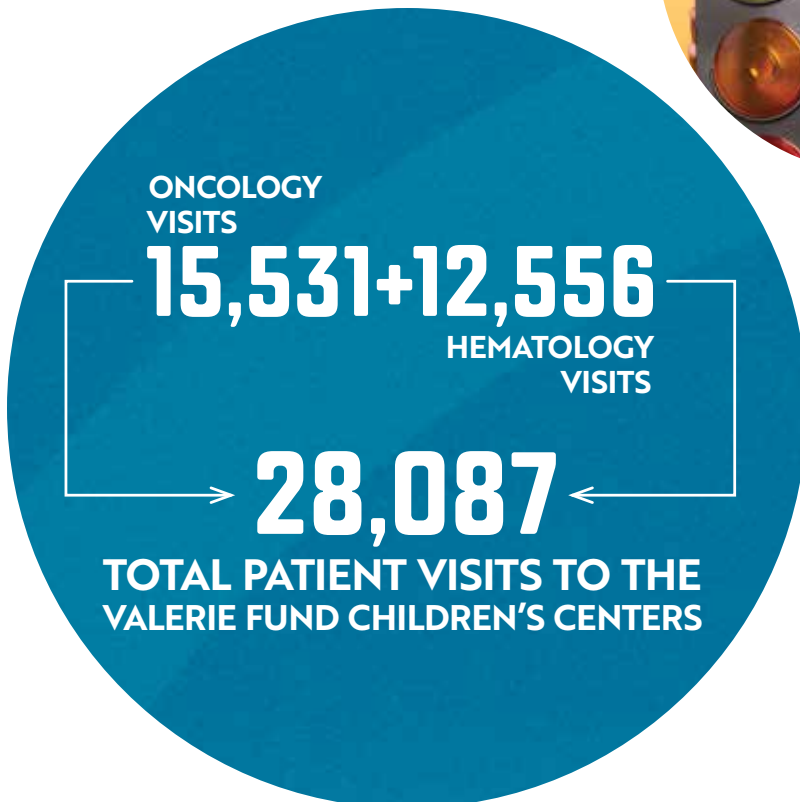
WITHIN THE VALERIE FUND CENTERS

- Child Life Specialists
- Oncology Social Workers
- Hematology Social Workers
- Educational Liaisons
- Psychologists/ Neuropsychologists
- Integrative Medicine Practitioners*
- Hemophilia/Thrombophilia Coordinators
- Psychosocial Nursing Support
- Late Effects Coordinators
- Long Term Follow-up Social Workers*
- Patient Navigators
- Palliative Care Clinicians
- Financial Counselors
- Recreational Therapist

BEYOND THE VALERIE FUND CENTERS

- 24-hour Mom-to-Mom Help Line
- Camp Happy Times for children with cancer
- Grief Counseling
- Post-secondary scholarships
- Flashes of Hope

*New or expanded in 2017



The impact of THE VALERIE FUND COMMUNITY...



• The **6th Annual “Taste of Giving”** raised over \$900,000 and was held at the Mandarin Oriental in New York. For each of the last six years, Valerie Fund Board Member **Sharon Weintraub** and her husband Josh have hosted this incredible fundraiser and mixed an evening of meaningful interactions with Valerie Fund patient ambassadors with a dose of Hollywood theatrics, enlisting auctioneer Susie Essman (“Curb Your Enthusiasm” Susie Greene) to benefit our kids. All of The Valerie Fund

programs benefit greatly from this incredible evening but once again our scholarship program was a major fundraising focus of this event. During the evening, donors learned about the courage, hope and optimism of over 80 scholarship recipients and their desire to choose careers that will give back.

- As they have for 25 years, **Morgan Stanley** continued their philanthropy by raising \$180,000 through their 2017 campaign for Morgan Stanley “Rec Day” and Camp Happy Times. The company’s junior and senior analysts gave over 125 children and their families a recreational day at Funplex in East Hanover, NJ where they were able to have fun with the kids—from getting in the foam ball pit with them, to playing video games and shooting hoops. Morgan Stanley has been the backbone of support for ensuring that Camp Happy Times is an enduring, incredible opportunity every summer for children with cancer for over a quarter century.
- Since 2006 **The Valerie Fund Walk & JAG Physical Therapy 5K Run** has grown in both participation and fundraising efforts. In the last six years, \$6,250,000 has been raised. This year more than 4,000 participants came to Verona Park on June 10th, with 204 teams and over 800 runners. This event was supported by 70 sponsors and many in-kind donations. Digital billboards from **Outfront Media** and **Clear Channel Outdoor** and radio spots featured on **CBS 880 Radio** increased awareness and visibility throughout the state. **John Elliott** and **Vanessa Murdock**, both from **CBS-TV2**, broadcast live from the park doing on camera interviews.
- Led by **Stephen Squeri**, Chairman and CEO of American Express, and Co-Event Sponsor **Richard Wood**, CEO and President of Plaza Construction, 120 golfers enjoyed Baltusrol Golf Club raising \$420,000 at **The American Express Charity Golf Tournament**. The evening’s speaker, patient Matthew, spoke about the importance of receiving his care close to home when he was treated for cancer at our Morristown center.
- **Wakefern Food Corp** believes “It’s simply what a good neighbor should do.” The **Inserra, Saker** and **Village** families of the cooperative’s ShopRite Supermarkets never hesitate to provide important local support through both monetary and gift in kind donations to many of our fundraising events.
- Since 2014 more than 200 New Jersey automotive retailers have supported the **New Jersey Auto Retailers Unite Campaign** raising \$1.8 million to date. The promotion has evolved into the **We Care Campaign**. In 2017, the participation of 66 dealerships raised \$155,000 to support all of the programs at our centers.
- **CAREoke for the Kids 12** raised \$200,000 bringing the total to more than \$1.7 million since 2006 and continued a tradition of nurturing philanthropy among a young demographic. More than 1,000 members of New York’s media community came to Irving Plaza and were treated to entertainment by their peers. We’re told P. Diddy, founder of the music digital cable TV network Revolt, was proud of his employees’ CAREoke 12 winning performance.
- The amazing partnership between The Valerie Fund and **Burger King franchisee owners** has raised more than two million dollars over two decades including \$101,000 at the **20th Annual Burger King Franchisee Children’s Charities Golf Classic**. This year’s honorees **Nathan Blau** and **Drew Paterno** have been leaders in their committee’s mission to support pediatric oncology in the New York metro area.
- The **4th Annual Toby Tyler Golf Invitational** raised a record \$155,000 bringing the total of the golf outings organized by **Luke Tyler** and **Art Moss** to more than \$360,000. One hundred and sixty golfers came to Fiddler’s Elbow Country Club and honored the legacies of humanitarians **Toby Tyler** and **Brock Lovero** for their love and advocacy for children.
- With ten locations in Monmouth County, Rook Coffee founders **Holly Migliaccio** and **Shawn Kingsley** have a strong connection to the communities and especially The Valerie Fund Center at Monmouth Medical Center. More than 3,000 runners and walkers crossed the finish line in Long Branch at the **4th Annual Rook Run (and walk)**. The support by Lead Sponsor **World Subaru** included Executive Manager **Joe Wajda’s** generous donation of a Subaru Forester for a raffle drawing. World Subaru employees committed their time and energy to #TEAMWORLD, making it the number one fundraising team at \$44,000. Over \$350,000 was raised at this event.
- The **26th Annual Thanksgiving Ball Gala** honored **Dr. Steven Halpern**, Valerie Fund Medical Director at the Goryeb Children’s Hospital at Morristown Medical Center. Fourteen Valerie Fund patients served as the evening’s ambassadors and interacted with guests as they visited learning depots, each highlighting Valerie Fund services and Camp Happy Times. Live and silent auctions made for another successful night of support where more than \$450,000 was raised.

CAMP HAPPY TIMES

for kids who have or have had cancer



THIS IS HOW WE
MEASURE SUCCESS:
Is it
**GOOD FOR
THE KIDS?**

While the rest of the world was living in the summer of 2017, Camp Happy Times hosted a week of time travel. Approximately 180 campers woke up in the 21st century but a time machine would soon transport the camp "Through the Decades," including the 1950's through the 1980's. Each day featured a special themed event, such as the 60's Groovy Get-Down arts & crafts stations and the 50's Sock Hop Dance.

Since 1983, The Valerie Fund has been hosting pediatric cancer patients and survivors at a free one-week sleep away camp. While at Camp Happy Times, thoughtful themes like this year's time travel set the tone for a week of building self-esteem, pushing through limits and making lifelong friendships. When asked recently to describe the thing they loved most about Camp Happy Times, patients and counselors all agreed the family that is created at camp is something they cherish beyond words. All of the love, laughter, smiles and fun that happens for one week of the year creates lifelong memories and friendships for our campers!

Any child who has or has had cancer is eligible to attend Camp Happy Times, regardless of where they were treated or where they live. Their illness is a common bond and "I know how you feel" is said often and honestly since many of the 100 volunteer counselors have been campers themselves. Campers are between the ages of 5 and 18 and the Leaders-In Training Program mentors young adult patients and survivors, ages 19-21. Located at Tyler Hill Camp in the Pocono Mountains, Camp Happy Times is just a two hour drive from New York City. As the miles slip away so do many of the worries. A week here can be life-changing. For a quarter century, **Morgan Stanley** has taken a major role in supporting this camp experience. A fundraising campaign led by the company's first and second year analysts encourages volunteerism and philanthropy and has benefited thousands of children. Also supporting the camp initiative are commitments by the **Tom Coughlin Jay Fund** and the **Daniel Galorenzo Foundation**.



TWO YEAR FINANCIAL SUMMARY

REVENUE	2015	2016	2017
Grants & Donations	\$2,426,450	\$4,012,065	\$3,323,898
Special Events (Net)	\$1,831,330	\$1,911,869	\$1,906,712
Investment Income	\$19,598	\$209,299	\$469,939
Total Operating Revenue	\$4,277,378	\$6,133,233	\$5,700,549

EXPENSES			
Program Services			
Hospital Centers	\$2,274,145	\$2,525,669	\$2,820,195
Camps	\$415,234	\$371,763	\$395,197
Advocacy	\$617,734	\$742,284	\$775,300
Total Program Services	\$3,307,113	\$3,639,716	\$3,990,692
Support Services			
Management and General	\$135,924	\$134,268	\$145,200
Fundraising	\$538,730	\$931,426	\$974,805
Total Support Services	\$674,654	\$1,065,694	\$1,120,005
Total Expenses	\$3,981,767	\$4,705,410	\$5,110,697

CHANGE IN NET ASSETS	\$295,611	\$1,427,823	\$589,852
----------------------	-----------	-------------	-----------

Unaudited 2017 Results



CHILDHOOD CANCER IS NOT ONE DISEASE—THERE ARE 16 MAJOR TYPES OF PEDIATRIC CANCERS AND OVER 100 SUBTYPES.



SICKLE CELL DISEASE AFFECTS APPROXIMATELY

100,000 AMERICANS[†]

About

1 IN 13 BLACK OR AFRICAN-AMERICAN BABIES

is born with sickle cell trait[†]

43

THE NUMBER, PER DAY, OF CHILDREN WHO ARE DIAGNOSED WITH CANCER*

6

THE AVERAGE AGE AT WHICH CHILDREN ARE DIAGNOSED WITH CANCER*

WHAT ARE THE SURVIVAL RATES FOR ACUTE LYMPHOBLASTIC LEUKEMIA?

About

98 PERCENT

of children with ALL go into remission within weeks after starting treatment*



About **90 PERCENT** of those children can be cured*



In 2017, about **4,970 CHILDREN**, adolescents and young adults younger than 20 years old were expected to be diagnosed with leukemia throughout the US*

*Source: The American Cancer Society

† Source: Center for Disease Control and Prevention

MAJOR CORPORATE AND FOUNDATION DONORS



THIS IS HOW WE
MEASURE SUCCESS:
Is It
**GOOD FOR
THE KIDS?**

WE GREATLY VALUE OUR RELATIONSHIPS WITH THE MAJOR CORPORATE FUNDERS AND FOUNDATIONS LISTED HERE.



Haymakers for Hope



Steven and Beverly Rubenstein
Charitable Foundation, Inc.

The Gelband
Family Foundation



EDWIN AND SUZANN GOLDSTEIN
FAMILY FOUNDATION

Morgan Stanley



The Valerie Fund

2017 LEADERSHIP

FOUNDERS

Ed & Sue Goldstein

OFFICERS

Dominic DiBari, *Chair*, LS Power

Julie Rubinstein, *Vice Chair*, Adaptive BioTechnologies

Brian D. Fuhro, Esq., *Treasurer*, Fuhro, & Beukas, LLP

Barry Kirschner, *Executive Director*, The Valerie Fund

BOARD OF TRUSTEES

Merrie Bernstein, Aramark

Matt DeNichilo, Energy Capital Partners

Tara Favors, Morgan Stanley

Peter Friedman, Integra Advisors

Harriet Greenholtz, Community Volunteer

David Novak, Clayton, Dubilier & Rice

Glenn Schiffman, IAC

Debbie Schiller, Community Volunteer

Steve Squeri, American Express

JC Uva, MediaLink

Sharon Weintraub, Community Volunteer

Neil Yaris, Financial Executive

Diane Young, M.D., GTX

LEADERSHIP COUNCIL

Howard E. Brechner, Esq., Weiner Lesniak

Ron Festa, New Heights Consulting

Janet Keating, Community Volunteer

Joseph Mangione, Alpha Media Group

Joe Uva, HMG Media

THE VALERIE FUND STAFF

Lori Abrams, *Director of Development*

Bunny Flanders, *Director of Marketing and Communications*

Don Robinson, *Director of Finance*

Jennie Leto, *Assistant Director of Development/Program Officer*

Jackie Ferdinandi, *Manager of Special Events*

Tina Kaplan, *Walk Campaign Coordinator*

Matt Ruttler, *Camp Happy Times Assistant Director*

Patrick Fisher, *Development Assistant*

Madison Welch, *Marketing Associate*

Barbara Efchak, *Campaign Coordinator, NJ Auto Retailers Unite*

THE GREEN LIGHT INITIATIVE STEERING COMMITTEE

Neil Yaris, Co-Chair

Harriet Greenholtz, Co-Chair

John Gallucci

Merrie Bernstein

Diane Young

Dominic DiBari

Barry Kirschner



2017 HONOR ROLL



THIS IS HOW WE
MEASURE SUCCESS:
Is it
**GOOD FOR
THE KIDS?**

VALERIE'S LEGACY

Members of Valerie's Legacy are donors who have named The Valerie Fund in their estate plan or have made a gift to The Valerie Fund endowment.

We recognize these donors in perpetuity for ensuring that the children we serve now and in the future receive the care and support that they deserve.

- *Judy Abrams
- Marilyn Adler/Martin H. Adler Children's Fund
- *David and Gail Cohen
- *E. F. Harris Family Foundation
- *George and Fran Foussianes
- *Michael and Debra Gelband
- *Ed and Sue Goldstein
- *Estate of Helen Grace
- The Kapnick Foundation
- *Janet Keating
- Lisa's Heart Kids Cancer Research, Inc.
- *David and Jane Novak
- *Bill and Heather Rainscuk
- The Raine Group
- *Glenn and Stacy Schiffman
- *Joel and Ethel Sharenow
- Jon and Abby Winkelried

VALERIE'S CIRCLE (\$100,000.00 +)

- Peter and Jennifer Friedman
- Justin Gimmelstob Children's Fund
- Michael Lukacs
- *David and Jane Novak
- *Steven and Beverly Rubenstein Charitable Foundation, Inc.
- *Debbie and Howard Schiller
- Stephen and Tina Squeri
- *Josh and Sharon Weintraub

LEADER (\$50,000.00 +)

- *American Express
- *Anomymous
- Robyn and Joseph Bier
- Frank Bruno and Aryan Shayegani
- Peter and Peggy Cherasia
- *Brendan and Jenifer Garvey
- *The Gelband Family Foundation
- *Ed and Sue Goldstein
- *E.F. Harris Family Foundation
- *Janet Keating
- RSM US LLP
- *Joel and Ethel Sharenow
- World Subaru
- Scott and Rachel Yedid

PHILANTHROPIST (\$25,000.00 +)

- *Merrie and Eric Bernstein
- Creative Foods Corp.
- Brian and Cynthia Fuhro
- Global Healthcare Management, LLC
- Haymakers for Hope
- Steven and Lauren Hollender
- *Inserra Supermarkets, Inc.
- *JAG Physical Therapy, LLC
- Joy In Childhood Foundation, Inc.
- Morgan Stanley Fixed Income & Commodities
- Overlook Hospital Foundation
- *Plaza Construction Corp.
- *RWJ Barnabas Health

- Saker ShopRites, Inc.
- Neil and Jane Yaris

BENEFACTOR (\$10,000.00 +)

- Timothy and Maureen Abbott
- Abco Peerless Sprinkler Corporation
- Daniel Anderson
- Anonymous
- ASM Mechanical Systems
- Bank of America Merrill Lynch
- Bats Global Markets
- Bederson LLP
- Alex Benjamin and Sheila Peluso
- Big G Charitable Foundation Corp
- Howard and Jill Brechner
- Daniel Choquette and Fabiana Bertolani
- Citigroup
- *David and Gail Cohen
- Comcast
- Credit Suisse
- Dannon Company, Inc
- Dechert LLP
- Discovery Networks
- Paul and Marina Donahue
- The Donaldson Organization
- Dun & Bradstreet, Inc
- Kevin Dunleavy
- East Coast Toyota
- Mark Eichorn
- Energy Capital Partners
- *The Daniel Galorenzo Foundation, Inc.
- GBOE Global Markets
- GM Advisory Group
- Goldman Sachs & Co.
- Daniel and Mary Hoffman
- Holman Enterprises
- Hope & Heroes Children's Cancer Fund
- IAC
- IMG
- Investors Bank
- J.P. Morgan Securities

- Jacksonville Jaguars, LLC
- JDP Mechanical Inc.
- Kimmelman Family Foundation
- Sheila and Henry Klehm
- KOA Care Camps
- Lowenstein Sandler LLP
- Mac Products, Inc.
- Mandelbaum & Mandelbaum
- Joseph and MaryAnn Mangione
- Thomas Marano and Erin DiBlasio
- The Jennifer and Frank Marzano Charitable Fund
- Jeffrey and Katina Mayer
- Mercedese Benz Newton/Sussex Honda
- Lee and Sylvie Millstein
- *Morgan Stanley Foundation
- Morgan, Lewis & Bockius LLP
- Morristown Memorial Hospital
- Mulvaney Family Foundation
- NBC Universal
- Fiona Nelson
- Michael and Elin Nierenberg
- Novartis Oncology
- Novartis Pharmaceuticals Corp.
- Parade Enterprises
- Parkview Plumbing
- Platkin Family Foundation
- PriceWaterhouseCoopers, LLP
- Quick Quality Restaurants, LLC
- Rackson Restaurants
- Randy Reiff
- *Richards Manufacturing Company
- Jeffrey Rosen
- Louis and Blair Rosenfeld
- Sansone Auto Group
- Liam and Joy Sargent
- *Barbara Schoenberg
- Schulte Roth & Zabel LLP
- Jon and Debbie Sebiri
- *ShopRite of Lincoln Park, Inc.
- St. Joseph's Children's Hospital
- *Summit Luminary Fund

*Indicates Champions Circle lifetime giving level.

•Indicates an additional donation to the Green Light Initiative.

James Tanenbaum and Elizabeth Scofield
 *Mark Taylor
 The Kamson Corp
 The Samuel Freeman Charitable Trust
 *Tom Coughlin Jay Fund
 Toscano Family Charitable Fund
 Toyota Dealer Match Program
 *Turner Broadcasting Systems
 J.C. and Liz Uva
 Viacom Media Networks
 Michael Weinstein
 Wells Fargo Securities
 *Richard Wood
 Yonggang Xue and Liye Zhang
 Yarad Family Fund
 •*Dr. Diane Young and Philip Crowley
 Xingbin Zhang

PARTNER (\$5,000.00 +)

ABC Family-Freeform
 A+E Networks
 Acura of Denville/Autosport
 Honda and Chevrolet
 Marilyn Adler
 Adobe
 Alphonoso, Inc
 AMC Networks
 Amherst Pierpoint Securities
 Mohit Assomull
 AT&T AdWorks
 Emily and Federico Baldwin
 Bank of America Matching Gifts
 Barclays
 Becton Dickinson & Co
 Bellavia Buick Chevrolet
 Russell and Pia Binns
 Blue Knights NJ Chapter III
 Brooke Bohnsack
 Burger Brothers Restaurant Group Inc.
 Christopher Burnett
 Burns Honda
 Cantor Fitzgerald Securities

CBS
 CDW
 Celgene Corporation
 CHANEL
 Matthew and Pamela Chasin
 CNN
 Coca-Cola North America
 Community Foundation of New Jersey
 Commvault Systems, Inc.
 Kevin and Dee Conway
 Coughlin Duffy LLP
 Crane Fund for Widows and Children
 Dean Michael Clarizio Cancer Foundation
 Deutsche Bank
 Devs Foods
 Discovery Communication
 Disney ABC Television Networks
 Dominate Food Services, LP
 Paul and Valerie Dottle
 Dr Pepper/Snapple
 R. Bradford Evans
 Chaojun Fan and Kaiyan Lin
 Jennifer Swift Fieldman Foundation Fund
 First Atlantic
 Fox News Group Services
 •Mark and Wendy Friedmann
 FUSE/NuvoTV
 Christine and Alan Gallo
 Garden State Honda
 Edward Geerlof
 Global Auto Mall
 *Lynda Goldschein
 Stephanie Grinis
 Jay Hallik
 Harvey Management Corp.
 Adam Helfant
 Brad and Jennifer Henis
 Herman and Florence Siegel Foundation, Inc.
 Holman Automotive
 Hulu



Independence Search & Abstract Co., Inc.
 ION Media Networks
 Jewish Communal Fund
 JLRJ, Inc.
 Jamieson Johnson
 Joy Street Foundation
 Dr. Hemant Kairam
 •Daniel Keating
 Michael Kennerly
 •Barry Kirschner and Beth Tepper
 William Kloos
 Daniel Kowarski
 KPMG
 Krause & Glassman, LLP
 Kushner Companies
 Lester Glenn Subaru
 Lillian Lorber Charitable Trust
 Jeffrey and Andrea Lomasky
 James and Barbara Majeski
 Malouf Auto Group
 Barry R. Mandelbaum
 Richard and Lianne Mandelbaum

•Jonathan Mann
 The Marcus Family Foundation
 Daniel and Barbara Masiello
 Max and Sunny Howard Memorial Foundation
 The Ryan E. McGeough Charitable Gift Fund
 Krista McKerracher and Michael McCabe
 MediaLink
 Ryan Mich
 Monmouth Medical Center
 Morgan Engineering LLC
 Morristown Pathology Associates, PA
 Murray Hill Health & Racquet Club
 Newark Beth Israel Medical Center
 NFL Ventures LP
 NJR Home Services
 Karen Norton
 Novartis Matching Gift Program



THIS IS HOW WE
MEASURE SUCCESS:

Is It
**GOOD FOR
THE KIDS?**

Ocean First Bank
Penske Hudson Toyota/
Chrysler/Nissan/BMW Tenafly/
Paramus Jaguar
Pier Village
Pine Belt Automotive, Inc.

*PNC Foundation

Quest Diagnostics Incorporated
Romark Management LLC
Saint Barnabas Medical Center
Salerno Duane Infiniti/Buick/
Rt. 18 Chrysler Dodge Jeep

•Glenn and Stacy Schiffman

Screenvision

•Debra L. Spicehandler

Simplicity Title, LLC

Tastemade

The Palace at Somerset Park

Toyota and Subaru
of Morristown

Tristar Products

Twitter

Univision Management
Company

UPS Foundation

Joseph Uva

Vevo

Village Super Markets, Inc.

*Wakefern Food Corporation

Waterfront Management
Systems

James Weathersby

Fred Weiss

Westcor Land Title Insurance
Company

Jon & Abby

Winkelried Foundation

Alfred and Jane Wolin

FRIEND (\$2,500.00 +)

Alan Aaron

Acute Care Experts Inc.

Heda Adams

Mark and Christie Adelman

ADP Foundation

Jennifer Alonge

American Council of Engineering
Companies of NJ

Anonymous

The Ansell Grimm & Aaron
Foundation, Inc.

Douglas and Amy Ashinsky

Aspire Fitness

Aspro Plumbing Inc.

Patricia Bartscher

Peter Berzins

BET

Bimbo Bakeries USA, Inc.

Blade General Contracting

Nathan and Robin Blau

Burns Hyundai Buick GMC

Nell Butler

Kelly and Kevin Calver

Kathleen Caporoso

Greg Carbone

*Ronald and Annette Carr

Circle Chevrolet Co.

Clayton Holdings LLC

Nat and Linda Conti

Whitney Costanzo

Mark Coxson

Leo and Margaret de Luna

Jason DeSalvo

Deutsche Bank

Donna T. Darrien Memorial
Foundation for Sickle Cell, Inc.

Saima Drzala

Thomas and Stephanie Durkin

Element iN Time NYC

Finkel Family Fund

Fox News

Andrew Frankel

Freehold Ford Inc.

Marianne Gambelli

Abby and Joel Goldberg

Scott Greenberg

Jillian Griffiths

John Hale and Susan Batta-Hale

Dr. and Mrs. Steven Halpern

Mark and Laura Heil

Michael and Betsy Hitzmann

Home Team Sports

James Hufnagel

Thomas Jannarone, Esq.

Dylan Jones

Clyde Kopchak

William Krovatin and

Patricia Schiripo

Michael Kumar

Ronald and Carol Kurtz

KW Metropolitan

Lang Smith Foundation

Arnold and Karen Leshner

Lipper Family

Charitable Foundation

Patrick and Jeanne Lukasavage

Stewart and Rhoda Manheim

Jamison and Carrie Mark

Peggy McGarvey

Metro New York

Franchisee Association

Howard and Ruth Miller

Steven Millerman

Monmouth Medical

Center Foundation

Morgan Stanley Short Hills

Brent and Amanda Morowitz

MR Valuation Consulting, LLC

Jennifer Mulcahy

The Munshine Group, LLC

Genghis and Nicole Niver

Nielson Auto Group

Nomura Securities International

North Coast Media/
Landscape Management

David and Alison O'Neill

Penn Mutual/New York

Metro Region

Pestone Family Foundation

PIMCO

David Prewett

•Princeton Strategic Comm.

Group LLC

Prudential Foundation Matching

Gift Fund

Purr'n Pooch, Inc.

Barry and Helen Reiter

Revolt Media and TV, LLC

Darrin Scherago

Henry and Jacqueline Schram

Scott Schundler

Scripps Networks

Bradley and Elayne Searles

SICOM Systems, Inc.

Michael and Jill Smith

Snap Inc.

Somerset Aerie FOE 2137

Frank and Julianne Sowinski

Michael and Laura Stemmler

Team Toyota of Princeton

The Children's Hospital
of Philadelphia

The Kellogg Club

Robert Thompson

Thomson Reuters

Daniel and Tresa Toscano

Toscano Family Charitable Fund

TV One

Two River Community Bank

Rick and Deborah Tyler

Gordon Uehling

UPtv

US Information Systems

Edward Valentino

Martin and Louise Viegas

Wallstein Family Charitable Fund/
Robert and Freida Wallstein

Joseph and Barbara Walsh

Wawa Inc.

The Weather Channel, Inc.

Peter Wunsch

ADVOCATE (\$1,000.00 +)

2000 Auto Sales, Inc.

239 Elmont Operating Corp DBA

Burger King/ Popeye's

41725 Fulton Operating Corp.

522 Fulton Oper Corp DBA

Burger King #21283

60 Metropolitan Operating Corp.

DBA Burger King/ Popeye's

Lori Abrams

Advanced Contracting

Solutions, LLC

Advanced Health Media, LLC



AINS Holding Co.
 Susan and Rakan Aledwan
 *Alfiero and Lucia
 Palestroni Foundation
 Frederic Amato
 AMC New York
 American Contractors of
 New Jersey
 American Laundromat Records
 Anonymous
 APHON NJ
 Applebees
 Arms Wide Open
 Cancer Foundation
 Ashenfelter, Slous, Trembulak,
 McDonough, Golia & Trevenen,
 Atlantic Coast Abstract Co.
 Atlantic Security & Fire
 Eric Atlas
 Paul and Frances Bagoon
 Thomas and Maureen Baker
 Michael Banchik
 Charles Bass

Thomas and Michele Bass
 Joshua and Dana Baumgarten
 Baxalta
 Kathy Bergsteinsson
 Greg and Leslie Besner
 Betons Prefabriques Du Lac, Inc.
 Bruce and Ruth Bier
 Susan Binns
 Duff and Rory Blair
 Dr. Martin Bleckner and Laura
 Bleckner
 •Michael Bloom
 BNE Real Estate Group
 Bunty and Charu Bohra
 Peter Bolo and Laila Almeida
 Michael and Miriam Boublik
 Bounce TV
 Nancy and Bill Bowkley
 James and Doris Breen
 Michael Breslin
 Glenn Briffa
 Bristol Myers Squibb Company
 Jeffrey Brodsky

Burns Hyundai Buick GMC
 Joseph Cairns
 Peg and Robert Canniff
 Carl H. Kumpf Middle School
 Thomas and Judith Cash
 Douglas and Elissa Caterfino
 Elissa Caterfino
 George and Chi hai Chen
 John Cheng
 E. Lee Childers
 Jessica Chutter
 Sabatino and Lynn Ciatti
 Roberta Cifelli
 Circle BMW
 Civetta Cousins JV, LLC
 Arnold and Jaclyn Civins
 Daniel Clancy
 Kevin and Mary Clarke
 James Cleary
 Cohn Reznick Foundation, Inc.
 Chris Colarossi
 Anthony and Alice Colarusso

Cole, Schotz, Meisel, Forman &
 Leonard, P.A.
 Comprehensive
 Orthopaedics, P.A.
 Condor Capital Management
 John and Christina Cooke
 Emily Corzel
 Crown Media Holdings, Inc.
 Joseph and Suri Cyriac
 Evan and Allison Damast
 Matthew and Jamie D'Amico
 Barbara Delaney
 Matthew DeNichilo and
 Rachel Cecil
 Elizabeth Dennis
 •Dominic and Karen DiBari
 John Dolan
 Ted Donatelli
 Joan and Charles Doomany
 Nielsen Group
 Dose Media
 Michael Dryden
 John and Siobhan Duffy
 Dr. Linda Dujack and
 Raymond Dujack
 Craig Eckes
 Mitzi and Warren Eisenberg
 Family Foundation
 Elm City Communications
 Enterprise Holdings
 Bruce Epstein
 John and Danielle Esposito
 Ess & Vee Acoustical
 Contractors, Inc.
 Susie Essman and Jim Harder
 Evercore ISI
 F & G Mechanical Corporation
 Robert and Norma Falcone
 FBD Partnerships, LP
 FCS Metro, LLC
 Bradley Feldman
 Justin and Jaclyn Festa
 Mindy and Jonathan Fetner
 Fidelity Brokerage Services LLC
 Fifth Generation Inc.
 Joseph Flouris



THIS IS HOW WE
MEASURE SUCCESS:

Is It
**GOOD FOR
THE KIDS?**

Mary and John Fischl
Todd Fisher
FJS Beverages, Inc.
Tony and Bunny Flanders
Patrick Fleming
Food Service Properties Corp.
Ford of Englewood, Inc.
Michael Forman
Michael Franco
Frank's GMC
William and Angela Freda
The Robert and Marilyn
Friedson Foundation
Sharon Friedson
James Froio
Benjamin and Stacey Frost
Josh Frost
Charles and Naomi Fruchter
Dan and Rachel Frydman
Ralph Gallucio
Garden State Tennis Center, LLC
Garden State Veterinary
Specialists
Bruce Garza
Arthur and Toby Geller
Nick Gelsomini
George Wall Ford Lincoln
Jack and Myra Gibson
Michael Gilbert
Dr. Linda Gillam
Giordano, Halleran & Ciesla, PC
Mark Gleason
GMP Contracting LLC
Abby and Joel Goldberg
Bruce and Hannah Goldman
Goldman Sachs Gives
Michael Gordon
James and Pendleton Gorman
Gregory Gould
Rhonda Graber
Clifford and Marthy Gray
Harley Greenfield
Jeffrey Greenholtz
Eli Gross
Gerald and Constance Grossman

Grounds Force
Landscape Contractors
Guggenheim Partners
Nancy Guillaume
Mae Lee Hacking
John and Kerry Hall
Anne and Ben Halliburton
Alexander Halpern
Liam Hanley
Harrison Cancer League
William and Luanne Harth
Brian Healy
Gary Hering
The Michael Herman
Cancer Foundation
Hoffman's Ice Cream
Jeffrey and Mary
Helen Holzschuh
Hoosick Street Wine Cellar
HR Industries
HSBC Securities
Susan Huang
Indoor Sports Pavilion
Insurance Office of America
Irish American Association of
Northwest New Jersey-IAANJ
Howard and Margaret Jacobs
Jamian's Food and Drink
Robert and Gail Janukowicz
Kenneth Jensen
Jethwa Management, LLC
Alan and Jill Johnson
Christopher Johnson
Johnson Dodge, Chrysler, Jeep
Jeffrey Johnson
Bill and Mary Johnston
Junior Woman's Club of
Somerset Hills
Juzefyk Bros. Construction
Ed Kachinski
Corinne Kampf
KAP Foundation
Leonard Karp
Stephen and Elaine Katzman
Kay Burger Management, LLC
William Kazcynski

Brian Kelly
Esther and Hugh Kennedy
Christopher Kim
Patrick Kim
Robert Kindler
Jean Kingston
Derek and Lisa Kirkland
Kissler & Co., Inc.
Barry and Stephanie Kissler
The Ruth Kissler Warshaw
Memorial Foundation
Brett and Alison Klein
Lois Kluberdanz
Kolberg Kravis Roberts & Co
Nancy Kontos
Kara Kopach
Kopacz for Freeholder
Drew Krichman
Kronthal Family Foundation Inc.
L2M Construction, LLC
Jeffrey and Heidi Ladrow
Steven Laforgia
Dorothy Lee and Victor Han
Ira and Ilene Lehman
Daniel Leiter
Wing Leong
James and Linda Leth
Lewis Brisbois
Leo Leyva
Lily Li
Liberty Contracting Corp.
Dr. Alan Liftin and
JeanAnn Morgan-Liftin
Linden Volkswagen
Robert and Mary Litterman
Livingston Services Corp.
Local Smoke BBQ
Mary Ann Lofrumento
Louis and Sylvie Magnan
Shahram Mahini
Manahawkin Kia Chrysler DiFeo
Manasquan Bank Charitable
Foundation
Mandelbaum Foundation
Mandelbaum, Salsburg, Lazris &
Discenza, P.C.

Nora Mann
Maplewood Police
Robert Margolin
Mariner Foundation
Margherita Marino
Ben and Jill Mawhinney
James and Katie McAdoo
Steve and Susan McGarry
David and Marjory McKee
Joseph McLee
McLoone Management
McMullen Family Foundation
Michelle Melnick
Brad Meltzer
Kirk and Susan Meyers
Michael J. Wright Construction
Co., Inc.
Midlige Richter, LLC
Miller Ford Lincoln Subaru
Morgan Melhuish Abrutyn
David and Stephanie Muldberg
John Murphy
Sarah Murray
Jean-Pierre and Nanci Naegeli
National Business Parks
Management, LLC
National Christian Foundation
Philip and Ellen Neches
New Jersey Devils
Newark Academy-Cancer
Awareness Club
Teresa Nitting
NJ Lenders
NJM Insurance Group
Norman Gale Oldsmobile Corp
Northvail School
The Linda Sue Pfarrer Nortillo
Charitable Foundation
Ocean First Foundation
Jason and Kerry O'Donnell
Order Sons of Italy in America
Philip and Liz Orsi
Outside Magazine
Ovation TV
P & B Partitions, Inc.
Robert Parks

Pawan Passi
 Paresh and Ruchita Patel
 Andrew and Bridget Paterno
 Payton Elevator Company, Inc.
 Richard and Natalie Peck
 Peckar & Abramson
 Penn Mutual Matching Funds
 Jill Perosi
 Phi Sigma Kappa Fraternity–
 Upsilon Hexaton Chapter
 John Picciano
 Greg Pine
 PIP Printing
 Steven and Kathy Plump
 PNC Equipment Finance
 Maria Porter
 Kevin Portnoy
 Premier Energy Group, LLC
 Procida of Funding and Advisors
 Jonathan and Lisa Pruzan
 Michael R. Pryluck
 Dante and Angela Puorro
 Joe Purcell
 The Kevin & Jane Quinn
 Family Fund
 Radius Digital Science
 Paul Raether
 Amit and Sheila Rametra
 Najma Rana
 •Evan and Susan Ratner
 Red Oak Mortgage Inc.
 Madhuri Reddy
 Restaurant Services, Inc.
 Dash Robinson
 Richard Robinson
 Martin Rodgers
 Robert and Debra Rosenbaum
 •Steven and Nancy Roth
 Michael and Jo Anne Rubin
 John Ryding
 S.C.O.R.E. 4 THE CURE, INC
 Joseph Sacco
 Amir Salomon and Gabrielle
 Marshall
 Peter Salwin
 Yesica Santos



Theresa Scallon
 Andrew Schoenfeld
 Bruce Schonbraun
 Schwartz Family Foundation, Inc.
 Manahawkin Kia Chrysler DiFeo
 Benjamin and Jaime Seeley
 Seigel Law
 •John Serruto
 Shampoochies
 Adam and Mary Shepard
 Gregory Sherry
 Short Hills Surgery Center
 Anatoliy Shukhman
 Michael and Kerin Sidlowski
 Christina Silva
 The Silver Family Foundation
 Danny and Lily Simo
 Simone Management Group, Inc.
 Craig Slater
 Norman Slonaker
 Smarties Candy Company
 Sobel & Co, LLC
 Jeffrey and Sheryl Sofferr
 Jodi Solotoff

The Solow Family
 Foundation, Inc.
 Sejal Somaiya
 Somerset Orthopedic
 Associates, PA
 Bruce Spear
 Spectrum Reach Charter
 Communications
 Richard and Jennifer Spinner
 Paul and Dolores Spivack
 Robert and Krystyna Steiger
 Louis and Linda Stellato
 Lawrence Steyn
 Mary Stone
 William Strauss
 Daniel Sullivan
 Summit Medical Group, P.A.
 Sussex Bank
 Diana Sutherlin
 David Sutz
 Sweeney & Sheehan
 Michael and Lori Swell
 Thomas and Patricia Swider
 Peter Sykes
 Tangent Construction

James Tennille
 TEVA Pharmaceuticals
 The SGMG Foundation
 Joel Thompson
 Yehuda and Janet Toledano
 Bruce and Robbi Toll Foundation
 Gabriel Topor
 Tremor Video
 Trenk DiPasquale DellaFera &
 Sodono PC
 Tribune Company
 William Tudor
 Brian Tunick
 Mary Jane Tyler
 UJA Federation of New York
 Union Stone Cleaning and
 Resoration Inc.
 Urban Electrical Contractors, Inc.
 Urner Barry Publications, Inc.
 Marcelo and Miriam Valenti
 Valley National Bank
 Valley View Const. Inc
 Barry and Dawn Van Doren
 Gilberto and Angelina Vendiola
 Dick and Lorraine Vitale



THIS IS HOW WE
MEASURE SUCCESS:
Is it
**GOOD FOR
THE KIDS?**

W.B. Mason
William Walenczyk
Watchung Pediatrics
Andrew and Allison Weintraub
Daniel Weintraub and Marcy Gekoski
Seth Weintrob
Derek Weissman
Wells Fargo Foundation
Ken and Erin Werner
The Westin Morristown
WGN
Brad and Beth Whitman
Wilf Family Foundation
Gail and Ralph Willner Giwerc
Thomas Wipf
Robert and Suzanne Woertz
Richard and Karen Wolfen
Jacky Wong
World Insurance Associates
Emily Woznick
John and Kathleen Young
Stanton and Amy Young
Lauren Youssef
Gary and Socorro Yusko
Zagwear, Inc.
Jane Zevon and
Joseph Schneider
Scott and Beth Zucker
Jeffrey and Kathryn Zukerman

We would like to thank the following individuals and organizations who have made in-kind donations of \$500 or more. These gifts of toys, warm clothing, gift cards and other materials make life happier for the children of The Valerie Fund.

Academy for Allied Health Sciences
Patricia and Chris Aliotta
Mary Aloe
American Express
ASCF Amanda Styles Cirelli Foundation
Bagelwich Bagels & Deli

Jenna Berney
Merrie and Eric Bernstein
Best Provision Co., Inc.
Bimbo Bakeries USA, Inc.
Blistex, Inc.
Borino's Pizza
Howard and Jill Brechner
Bressler, Amery & Ross, P.C.
Cancer Genetics, Inc.
CHANEL
Churchill Living
Nat Clymer
Coca-Cola Glaceau Vitaminwater
Cotton Valley
Creations by ME
Definitive Pro Sound
Dunkin' Donuts
Eight Hills Caterers
Elite Island Resorts-Caribbean
Eppes Essen of Livingston
Robert Fani
Flashes of Hope
Friends of Johnny Dee
Friends of the Westfield Library
Gallant Entertainment
George Washington Middle School
Girl Scout Troop 2771
Harrison Cancer League
Hearts of Cheer
Herr Foods, Inc
Doris Hillson
Hilton Short Hills
Holt Machinery Company
Impact 4 Good
JAG Physical Therapy, LLC
Jaime's LILAC Foundation
Leo Jasper
Jessie Rees Foundation
Joey's Fine Foods
Junior Woman's Club of Somerset Hills
Just 4 Kids NJ
Maureen Kelly
Patricia Keschl

LandyVision, Inc.
Gretchen Lerach
Mason Levitt
Tyler Levy
Libman Company
Live Oak Landscape
Maines Paper & Food Service, Inc.
Manolo Blahnik USA
Masana NYC
Master Yoo's Summit Martial Arts
McGinn Elementary School PTA
MK & A
Montclair Art Museum
Mt. Pleasant Elementary School PTA
Naked Juice
New Jersey Devils
New Jersey Society of Certified Public Accountants
New Shrewsbury Racquet Club
Newark Academy-Cancer Awareness Club
NJ Fun Services
NJ Rockets Squirt AA Hockey Team
David and Jane Novak
Oak Knoll School
Philly Pretzel Factory
Polar Bear Grand Tour
Michael Pollack
Robert and Jane Poznak
Richard Shen Photography
Rook Coffee
Salem Drive School
John Sartor
Julia Scafidi
Louis Scafidi
S.C.O.R.E. 4 THE CURE, INC
The Shannon Rose
ShopRite of Lincoln Park, Inc.
Nick and Tara Spagnoletti
Stephen and Tina Squeri
Andrew Steiner
Stop & Shop
Taylor Products, Inc.

Ryan Torok
UPS NJ District
Joseph Uva
Village Super Markets, Inc.
Vision Products
Washington Ave School
Washington Community School PTO
West Essex Woman's Club
Darrell Wright
Yasso Frozen Greek Yogurt

In 2017, the following individuals received tributes in their honor or memory

Gina Ardito
Denise Baime
The Balan Family
Jean Bernstein
Isabella Binns
Ed Bond
Lorraine and Patricia Bremer
Susan Ellen Bromberg
Andrew Buckner
Annie Bush
Gavin Callow
Theresa Carter
Kevin Michael Clabby
Will Cody
Jonathan D'Amico
Jessica Dee
Joe, Claire, Ben, Maddie, Mary, and Cate DeLong
Nate Dibari
Danielle Draina
Heather Dugan
Brett M. Durant
Tara Favors
Millie Finkel
Bunny Flanders
Debra Flower
John Gallagher Jr.
John Gallucci
Mayor Carolann Garafola
Carol & Neeraj Garg
Patricia Garlipp



David A. Novak
 Robert and Christine Pestone
 Mark Reilly
 Alexa Richmond
 Julie Rubinstein
 Emily Rubinstein
 Dominick Sarappa
 Howard and Debbie Schiller
 Marion Shapiro
 The Siegel children
 Robert H. Silver
 Zoe Slavin
 The Stoma Family
 Elizabeth D. Straus
 Mike and Sue Turk
 Hilary Young
 John and Beverly Voorhees
 John F. Waller
 Aaron Weinstein
 Sharon and Josh Weintraub
 Muriel Weiss
 Diane Young

Debra Gelband
 Ed and Sue Goldstein
 Dan Gordon
 Lori Kaufman and Roy Greenfield
 Steven L. Halpern
 Aiden Harrington
 Steven and Lauren Hollender
 Jack Jacinto
 Lynn Jones
 Steve Jones
 Peri Kamalakar
 Haley Kampner
 Charlotte Karchan
 Lori M. Kaufman
 Janet Keating
 Matthew P. Klein
 Christopher Krakowiecki
 Allison M. Lacey
 Jennifer Marquez Contuzzi
 Melissa Merriam
 Mr. and Mrs. Mark Minto
 and Robby

Damsy and Lexi Muraca
 Alexa Nitting
 Dorothy Okun
 Robert and Jane Poznak
 Jared Rascio
 Deb Rodgers
 Rosa Rodriguez
 Mikaela Santos
 Tyler Schicke
 Debbie Schiller
 Kathryn Schulien
 Sebastian Scicolone
 Daniel Simpson
 Rosemichele Sorvino
 Joanne Spera
 The Spoerl Family
 Stephen and Tina Squeri
 Shifra Hoffman Srolovitz
 Carol Stillwell
 Sara Stoma
 Stefan Tamminga

The Valerie Fund Junior Board
 of Trustees
 Dawn Van Doren
 Robert and Freida Wallstein
 Barbara Weissman
 Nicholas Wihlborg
 Gail and Ralph Willner Giwerc
 Sylvie Yarad
 Neil Yaris
 Ellen Yevak
 Diane C. Young
 Ilana Mandelbaum
 Joe Mangione
 Jennifer Marquez Contuzzi
 Krista McKerracher and
 Michael McCabe
 Maureen Baker and Staff of
 Morristown Medical Center and
 Overlook Hospital
 Claudia Newport
 Aaron Newton
 Genghis and Nicole Niver

**Thank you to our
 Media Partners**

TV

CBS TV
 Comcast
 Cablevision

Outdoor

CBS Outdoor Campaign
 Interstate Media

Radio

WMGQ, WCTC, WDHA, WMTR,
 WJRZ, and WRAT
 WCBS Newsradio 880
 WFAN
 WFTU
 WOR
 Z100
 Power 105.1
 WABC



THIS IS HOW WE
MEASURE SUCCESS:
Is it
**GOOD FOR
THE KIDS?**

MEET OUR PATIENTS AND CAREGIVERS

Front cover Jose, age 8, diagnosed with ALL (Acute Lymphoblastic Leukemia)

Inside front cover Child Life Specialist, Kelsey Gitchell with Isabell, age 3, diagnosed with Rhabdomyosarcoma

Page 1 Sylvie, age 15, diagnosed with Hodgkin's Lymphoma; Barry Kirschner, Executive Director of TVF; Juliet, age 6, diagnosed with ALL; Megan, age 24, diagnosed with T-Cell Lymphoblastic Lymphoma; Annie, age 5, diagnosed with ALL; and Dominic DiBari, Chair of TVF

Page 2 Antwann, age 6, diagnosed with Sickle Cell Thalassemia

Page 4 Kayla, age 19, diagnosed with Non-Hodgkin Lymphoma

Page 5 Emmanuel, age 17, diagnosed with Hodgkin's Lymphoma with Educational Liaison, Jaqueline Frangoso-Acevedo

Page 6 Social Worker, Ann Stocknoff with Joanna, age 19, diagnosed with Lymphoma

Page 7, Top-down Jose, age 8, diagnosed with ALL; Tyler, age 9, diagnosed with Thalassemia; Isabell, age 3, diagnosed with Rhabdomyosarcoma

Page 8 Hayden, age 21, diagnosed with Hodgkin Lymphoma

Page 10 Olivia, age 17, diagnosed with Ewing's Sarcoma

Page 12 Julie Mayers, Recreational Therapist with Antwann, age 4, diagnosed with Germ Cell Tumor

Page 14 Isabell, age 3, diagnosed with Rhabdomyosarcoma with Jose, age 8, diagnosed with ALL

Page 16 Cesar, age 21, diagnosed with Hodgkin Lymphoma with Social Worker, Cathy Cerutti

Page 18 Kelly Blanchette, Child Life Specialist with Mikaela, age 4, diagnosed with Germ Cell Tumor

Inside back cover Emmanuel, age 17, diagnosed with Hodgkin's Lymphoma



OUR PROGRAM LOCATIONS

*at The Valerie
Fund Center in*

- Children's Hospital of New Jersey at Newark Beth Israel Medical Center
- Children's Hospital of Philadelphia, New Jersey Section of Hematology/Oncology, Specialty Care Center, Voorhees, NJ
- Morristown Medical Center, Goryeb Children's Hospital, Morristown, NJ
- New York-Presbyterian Morgan Stanley Children's Hospital Columbia University Medical Center, New York, NY
- Overlook Medical Center, Summit, NJ
- The Unterberg Children's Hospital at Monmouth Medical Center
- St. Joseph's Children's Hospital, Paterson, NJ
- Camp Happy Times, Tyler Hill, PA

