



2021  
IMPACT REPORT

# CARING FOR CHILDREN

WITH CANCER  
AND BLOOD  
DISORDERS



**OUR MISSION** THE VALERIE  
FUND'S MISSION IS TO PROVIDE SUPPORT  
FOR THE COMPREHENSIVE HEALTH CARE  
OF CHILDREN WITH CANCER AND  
BLOOD DISORDERS.

## THE VALERIE FUND LEADERSHIP 2021

### FOUNDERS

Ed Goldstein  
Sue Goldstein

### EXECUTIVE DIRECTOR

Barry Kirschner

### BOARD OF TRUSTEES

Neil Yaris, *Chair*  
JC Uva, *Vice Chair*  
Brian D. Fuhro, Esq., *Treasurer*  
Merrie Bernstein  
Joseph Cyriac  
Matthew DeNichilo  
Dominic DiBari  
Peter Friedman  
Harriet Greenholtz  
Chris Johnson  
Janet Keating  
Neil Mehta  
David Novak  
Julie Rubinstein  
Glenn Schiffman  
Stephen Squeri  
Sharon Weintraub

### LEADERSHIP COUNCIL

Howard Brechner, Esq.  
Tara Favors  
Ron Festa, Ph.D.  
Joe Mangione  
Krista McKerracher  
Debbie Schiller  
Joe Uva  
Diane Young, M.D.

### JUNIOR BOARD CO-CHAIRS

Brendan McGann  
Jake Scherzer  
Daniela Verdugo

### THE VALERIE FUND STAFF

Lori Abrams,  
*Director of Development*  
Diana Arcure,  
*Marketing Coordinator*  
Leah Del Piano,  
*Manager of Communication & Events*  
Millie Finkel,  
*Camp Happy Times Director Emeritus*  
Bunny Flanders,  
*Director of Marketing and  
Communications*  
Aimee Kowalak,  
*Database/Office Manager*  
Laura Lentini,  
*Development Assistant*

Jennie Leto,  
*Assistant Director of Development/  
Program Officer*  
Brett Murphy,  
*Assistant Manager of Marketing &  
Special Events*  
Don Robinson,  
*Director of Finance*  
Matt Ruttler,  
*Camp Happy Times Director*  
Randi Zamkotowicz,  
*Assistant Director of Development  
for Philanthropy*



Dear Friends:

We are proud to report that despite all the challenges in 2021, it was another incredibly successful year for The Valerie Fund, our children, and their families. Regarding fundraising, it was actually a record setting year with over \$8.6 million raised to support our current and future programs as well as a very exciting geographic expansion of our programming.

Last year we again provided over \$3 million in psychosocial support to our seven Valerie Fund Children's Centers. These centers supported about 6,000 children battling cancer and blood disorders and their families, and provided over 33,000 patient visits in 2021. Taking what we learned in year one of the pandemic, we again hosted an amazing Camp Happy Times for our campers, albeit virtually. And we broke our previous year's scholarship record by awarding 101 scholarships totaling \$406,000 to some of the bravest teens and young adults you'll ever know, all in an effort to encourage them to further their education and dreams.

The most exciting thing of all may be what happened coming out of 2021. The year's successes set us up for an expansion of our impact and reach. We are finalizing a partnership with Stony Brook Children's Hospital on Long Island to name our eighth Valerie Fund Center. This new center on Eastern Long Island will bring our full spectrum of psychosocial programs to another 1,000 plus children annually, who heretofore didn't have social work, child life, psychology, educational support, or long term follow-up programs. We are incredibly excited at this opportunity to expand our impact and geographic reach.

The Valerie Fund's future is very bright. We cannot thank you enough for playing such a large role in making all these stories possible. Be proud of what you've helped us accomplish, smile as you read the amazing stories on the ensuing pages, and please help us do more in the years ahead.

**We are, and will always be, "all about the kids."**

Sincerely,

Neil Yaris  
Chair

Barry Kirschner  
Executive Director

# Supporting patients' mental health during the pandemic

Having cancer is an isolating experience during “normal” times. The pandemic, however, exponentially worsened this experience for children, teens, and young adults.

**Dr. Natalie Nageeb**, psychologist at the **CHOP/Voorhees Center**, created virtual group therapy. The program offers patients struggling with the challenges of both cancer and the pandemic a place where they can connect, find common ground with others, and feel like they are a part of something.

Having cancer can often make old friendships begin to feel different, or even fade away. The group allows kids to form connections with peers who understand how cancer changes you in many ways-- your relationships, your outlook on life, and your perspective on the future. By being vulnerable and supporting each other, kids in these virtual groups build meaningful relationships and a sense of belonging despite the additional isolation caused by the pandemic.

**Dr. Dara Steinberg**, psychologist at **TVF Center at Columbia University Medical Center**, had a patient who had been sick her entire life. As time passed, her disease worsened. As she matured, she noticed differences between herself and her friends and began to ask questions. In addition, trips to the hospital were arduous. Her parents thought that she would benefit from meeting with a psychologist.

During the pandemic hospitals hurried to develop the technological infrastructure for telehealth. This allowed Dr. Steinberg to meet with patients virtually. Initially the patient was uncertain about meeting, but through weekly sessions she and Dr. Steinberg developed a strong rapport.

Borrowing from trauma-informed cognitive behavioral therapy, the patient and Dr. Steinberg began to write the story of her life, in words and illustrations. This story gave the patient a process by which she could express herself and her emotions, such as how she felt about medical care and questions she had for her parents. This project would have been impossible to implement were it not for the technology the hospital created to care for their patients during COVID.

They continued using the story as a medium for therapy throughout her final hospitalization. Her life story in her own words and artwork, was a lasting memorial and testament of this young lady's strength, courage, and endless love for her parents.





# Adapting to the pandemic

## MONMOUTH VALERIE FUND CHILDREN'S CENTER



Child life specialist Casey Gilman reintroduced the Bravery Bead program using extra COVID precautions. Bravery Beads are akin to badges of honor. Each bead represents a medical experience-- having a port placed, a lumbar puncture, ending chemo, etc. The result?

A tangible representation of patients'

medical journeys that may stimulate patients to reflect and process those journeys.

## ST. JOSEPH'S VALERIE FUND CHILDREN'S CENTER IN PATERSON

Social worker Shannon Heffernan recognized siblings' needs for processing the impact of their brothers' and sisters' diagnoses. Since COVID protocols prevented them from coming to the Center, Shannon began meeting with them virtually. In addition, art supplies were sent home for making gifts their siblings could hang from IV poles as reminders of their special bonds.

## NEWARK BETH ISRAEL MEDICAL CENTER

Mariella Silva provides integrative medicine, much of which is hands on. Because COVID protocols limited patients' time in the Center, she empowered everyone by teaching them integrative medicine methods for home. Massage is effective for sickle cell patients when done in a certain way; a typical muscle massage increases pain in these patients. Mariella taught parents how to give their children a soothing massage instead.

## GORYEB CHILDREN'S HOSPITAL, MORRISTOWN MEDICAL CENTER

Educational liaison Caitlin Constantino created a way for a patient to begin college amid the pandemic. When illness prevented him from beginning his studies in person, Caitlin advocated on his behalf, asking college officials if he could begin the semester virtually. Thankfully, the college was able to accommodate him because of the infrastructure created during the pandemic. Because of Caitlin's support, his pursuit of an engineering degree began on time.



# Emergency Funding helps Valerie Fund families

For many families, costs associated with having a seriously ill child place an unbearable financial strain. This strain may come from the need to reduce shift hours or to step away from employment temporarily to care for the sick child. In the case of a dad who owns a school bus company and was unable to work due to COVID, we were able to offer help with a car loan. For a sickle cell patient whose mom's hours were reduced because of the pandemic and father's work was halted, The Valerie Fund made it possible for them to pay rent.

The Valerie Fund's emergency funding helps to bridge the gap for basic needs. Social workers across The Valerie Fund Children's Centers are able to tap into the **Ed and Sue Goldstein Emergency Fund**, as well as the **Christy Marie Bisgrove Hematology Emergency Fund**. At the CHOP Center in Voorhees, social workers have access to the **Holman Foundation Emergency Fund** set up specifically for families served there.

**IN 2021,  
THE EMERGENCY FUND  
DISTRIBUTED \$124,957  
TO FAMILIES FOR:**

- Food
- Medication not covered by insurance
- Mortgage and rent
- Transportation
- Utility bills
- Phone and cable bills
- Car loans
- Funeral assistance
- Insurance premiums
- Bereavement jewelry

## There's no place like camp



Camp Happy Times followed the Yellow Brick Road with an amazing Wizard of Oz theme in 2021. Although CHT remained virtual for a second year, this would not deter the staff from

providing campers with a memorable experience. Campers and staff received their "Happy Camper Kits" with all the materials (and a few surprises) they needed for an excellent week!

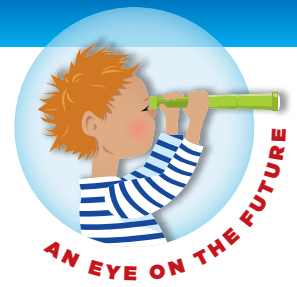
CHT was transported over the rainbow to a land of friendship, bravery, brains, and heart. Campers were placed into three age groups: the Fabulous Flying Monkeys, Terrifying Twisters and the Merry, Merry Munchkins. Campers enjoyed arts and crafts with Camp Director Matt. A camp favorite, cooking, continued in Beth's kitchen with amazing desserts and mac & cheese. Zoom games, as well as beading with the Bead Lady, were huge hits.

Our fishing team taught knot tying and our own music guru Mel helped our campers write their very own song. Our British friends Mags and Tanith demonstrated how to tie-dye shirts and bandanas. Every group enjoyed the most relaxing session of yoga with Cara.

The Leaders-in-Training (LITs) created a phenomenal virtual board game for all to enjoy. Evening programs included trivia, our famous talent show, the masked singer and our rockin' dance with DJ Jak. Smiles, fun, laughter and memories that last a lifetime are always on the menu at Camp Happy Times. Staff and campers alike are looking forward to being together again next year in person at Tyler Hill, Pennsylvania.

**“YOU’VE ALWAYS HAD THE  
POWER MY DEAR, YOU JUST  
HAD TO LEARN IT  
FOR YOURSELF.”**

~ L. Frank Baum



# The Valerie Fund Scholarship Program: Building the Future

Since its beginning in 2006, The Valerie Fund Scholarship Program has given financial support to hundreds of our patients—both current and former—to put toward the costs of post-high school education.

Thanks to the generosity of our donors, The Valerie Fund granted 30 named scholarships for the 2021-22 academic year, and an additional 70 general scholarships totaling more than \$400,000 dollars. Recipients are selected by a committee based on academic achievement, determination and motivation, community involvement, and financial need. Meet a few of our 2021-2022 scholarship recipients.



**GIANCARLO**, a recipient of a **Yedid Family Scholarship**, is studying neuroscience and behavioral biology at Emory University. When he was a freshman in high school, Giancarlo was diagnosed with brain cancer. While he was interested in being a doctor before his diagnosis, having cancer increased his passion to learn about medicine and the intricacies of the brain. When first diagnosed, doctors told him to “be realistic” and accept that “he wouldn’t be able to continue high school.” But Dr. Dara Steinberg and Educational Liaison Caitlin Constantino helped him stay in high school and “do it more gracefully than I could have imagined.”



**KAYLA**, recipient of the **Arnold A. Leshner Scholarship**, is a senior at the University of Pennsylvania studying health and societies. She is also sub-matriculating to get her master’s degree in public health. Kayla is interested in healthcare policy as a career. She has been a Valerie Fund patient since birth when she was diagnosed with sickle cell disease. While she is grateful for the staff who helped her cope with both the physical and emotional effects of her illness, she is especially grateful to Dr. Kam who became a “part of her family.”



**CARTER**, recipient of the **Choquette/Bertolani Family Scholarship**, is a sophomore at Widener University. He is in a six-year program to get a B.S. in biology and a doctorate in physical therapy. Born with sickle cell disease, Carter is a lifelong Valerie Fund kid. Once Widener resumed in-person classes, he could meet friends and join clubs. Carter is in a leadership position within student government; trying to create a community for students of color through his participation in the Black Student Union; and tutoring a freshman in biology. Carter is particularly grateful for The Valerie Fund’s help, especially with helping him find a summer internship. His Valerie Fund experience has been “amazing and has provided anything I needed for 20 years. . .The amount of love and support and praise is overwhelming. . .I don’t know if any words can describe how thankful I am to The Valerie Fund donors.”



**MARIA** is a junior at Montclair State University majoring in psychology. After earning her bachelor’s degree, she hopes to get a master’s degree in art therapy. Art helps her express her emotions and was especially useful to her when she was diagnosed. She hopes to show children who have trouble expressing themselves how art can help them with these skills. Maria was diagnosed with Hodgkin lymphoma when she was 12, then with acute lymphoblastic leukemia when she was 14. She has been in remission since 2015. Maria is grateful to the funders supporting her education so she can study what she is passionate about.

# Steven Halpern, MD—A model of compassion, vision, and excellence

Ed and Sue Goldstein, founders of The Valerie Fund, describe Dr. Steven Halpern as “a giant in the field of pediatric cancer.” For over 40 years, he has, “...cured, healed, brought hope and comfort... strength and guidance to his patients and his families,” says Dr. Walter D. Rosenfeld, Chair of Pediatrics at Goryeb Children’s Hospital, Morristown Medical Center,



**Dr. Halpern, Zippy, and Maureen Baker**

Dr. Halpern, Medical Director of The Valerie Fund Center at Goryeb, will retire in the spring of 2022. As he steps down from this role, his colleagues, patients, and families recall his selfless dedication to easing the suffering of so many.

Dr. Halpern has spent over 30 years at The Valerie Fund during two separate terms, as well as a dozen years at the Tomorrow’s Children’s Institute at Hackensack University Medical Center. “The Valerie Fund is a remarkably positive place to work,” says Dr. Halpern, explaining his long tenure here. “We are able to get through each day because the entire staff feels part of a big family that works together to care for our patients and their families.”

There was a time when pediatric cancer care meant solely focusing on a child’s medical care. Dr. Halpern created an innovative care model that has been adopted by many other programs. Dr. Heather Ginter, a psychologist at the Morristown Valerie Fund Center,

explains that he, “brought his vision to integrate the whole child and the whole family into medicine by championing psychosocial care.” She further says that when she watches him interact with patients she is “witnessing the gold standard of medicine.”

Ask anyone who knows Dr. Halpern, whether as patients or families or colleagues, and it is likely the first thing they will mention is his compassion. Former patient Ellen says, “I am forever grateful for his outstanding care and commitment to saving my life. He treated me, healed me, and nurtured me.”

Child Life Specialist Kelly Blanchette notes, “He has provided top notch, compassionate care for the most important people here—our patients...He clearly values each child and family...He has instilled that level of caring for the family on each member of our team and I think we are all better caregivers and people for that.”

Janet Keating, former TVF Chair and Board member since 1991, has known Dr. Halpern since her son Eric was diagnosed with Burkitt’s lymphoma in 1989. She has known him both “as an oncologist and friend.” She says Dr. Halpern, “believe(s) in the mission of The Valerie Fund and execute(s) it to the fullest.”

Former patients speak of the respect Dr. Halpern gave them. Matt says, “You were always honest and treated me like an adult...you were always happy to answer my questions.” Another patient says, “He was a source of strength that I desperately needed...

Where everyone else was weepy, emotional, fearful, he made up for it with his resoluteness and honesty. He never lied, never sugar-coated things.”

Patients also remember shared moments of levity. Matt says, “I loved talking with you about the Eagles as they were on the road to their first Super Bowl win.”

He cares about those he has treated long after they have been his patient. Dr. Halpern finds “no greater joy than attending a Bar Mitzvah or a wedding or getting pictures of children of patients that we have cared for.” He appreciates when current patients and families can see the children of former patients, as this reinforces for them that “my optimism was genuine.”

Dr. Rosenfeld sums it up by saying Dr. Steven Halpern is “beloved by his patients and their families, and has earned the respect and admiration of his colleagues. Steve, you have left your mark on the children, families, and staff of The Valerie Fund.”





# Our donors make the difference

## A REMARKABLE GIFT FROM TWO REMARKABLE PEOPLE



The Valerie Fund's 30th Thanksgiving Ball in November 2021 was already the most successful one ever held. There were 500 attendees and the Ball had raised \$2.8 million.

Then Steve and Tina Squeri stood up and announced they were donating \$1 million to support all Valerie Fund programs. The attendees burst into wild applause and gave them a standing ovation.

"For more than 15 years, Tina and I have been honored to support families during critical moments in their lives through our contributions to The Valerie Fund," Steve commented. "We are grateful for the important work The Valerie Fund does to treat thousands of children each year."

This is a couple whose lives are steeped in giving and philanthropy, both at The Valerie Fund and for a myriad of other causes. Tina has been a dedicated Valerie Fund volunteer for 15 years, including leadership positions for planning the American Express Charity Golf Tournament, Grace's House, and the Thanksgiving Ball Gala. A sample of other nonprofits to which she has lent her talents and hard work include Junior Achievement, Project Sunshine, and Harlem Children's Zone.

Steve has been at American Express since 1985 and was named Chairman and CEO in 2018. He is on the Board of Trustees of The Valerie Fund, having hosted the American Express Golf Tournament for 15 years and supporting the Gala. He also sits on the boards of Memorial Sloan Kettering Cancer Center and his high school and college alma maters. Together he and Tina have four daughters.

Neil Yaris, Chairman of The Valerie Fund Board says, "This level of generosity shouldn't really surprise any of us who know them well. They are remarkably kind people who are always looking to help those in need."

## The 2021 New Jersey Auto Retailers Unite Campaign

# raises over \$500,000 to support The Valerie Fund

Since 2014, more than 200 New Jersey new car and truck dealerships have participated in New Jersey Auto Retailers Unite campaigns benefitting The Valerie Fund. This initiative has raised over \$2,250,000.

We are thrilled to report that the 2021 campaign met its goal of raising \$500,000! This year's campaign was especially focused on educating the public about sickle cell disease. The Valerie Fund Children's Center at Newark Beth Israel, a nationally recognized Comprehensive Sickle Cell Center, treats more young sickle cell patients than any other hospital in New Jersey.

Celebrity spokesperson Rosario Dawson was featured in this wildly successful September 2021 campaign.

"New Jersey's 500+ franchised neighborhood new car and truck dealerships... compete for customers every day, but they can also

unite behind a worthwhile cause," said Jim Appleton, President of the New Jersey Coalition of Automotive Retailers. Judith Schumacher-Tilton, NJ CAR Chairwoman

and owner of the Schumacher Auto Group, added, "It is especially important to support the hundreds of children with sickle cell disease treated at Valerie Fund Centers. This is an incurable disease that affects an underserved population."



# Taste of Giving celebrates its 10th year



## CO-HOSTED BY

*Alex Benjamin and Sheila Peluso*

*Daniel Choquette*

*Matthew DeNichilo and Rachel Cecil*

*Brendan and Jenifer Garvey*

*Brad and Jennifer Henis*

*Daniel and Mary Hoffman*

*Jeffrey and Katina Mayer*

*Randy Reiff*

*Bob Richter*

*Jonathan and Debbie Sebiri*

*Marc and Bridget Toscano*

*Josh and Sharon Weintraub,  
Event Co-founders*

*Scott and Rachel Yedid*

*Ben Zhang*

"A Taste of Giving" launched in 2012 as a premium wine and champagne tasting dinner event and auction that would grow from its original goal of \$100,000 to nearly \$1.1 million a decade later and gross more than \$8.5 million in the first 10 years. Celebrity auctioneers elicit donations from \$2,000 to \$100,000 to fund everything from Camp Happy Times sponsorships to months of psychosocial services at The Valerie Fund Children's Centers, and named scholarships that have grown the Valerie Fund Scholarship Program into one that helps pay for medical school, social work degrees, and pursue secondary education in any field chosen.

Co-founded by Josh and Sharon Weintraub, Sharon's personal experience of supporting a close friend through her infant daughter's successful cancer treatment at a nearby Valerie Fund Children's Center was the inspiration.

"I saw up close the importance of having pediatric cancer care with psychosocial support for the whole family close to home and I had to get involved," says Sharon. She became a donor, involved her young girls in running band-aid and toy drives, and even volunteered at the Center. "I would talk about The Valerie Fund over the dinner table with my family, so when Josh decided to join Wall Street Boxing in 2007, he thought of The Valerie Fund."

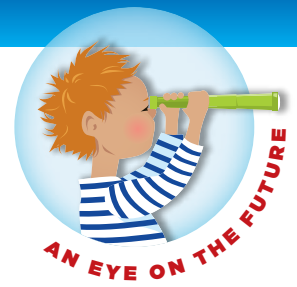
Wall Street Boxing featured traders who leveraged their competitive side for charity. "When I thought about which charity my boxing

event should benefit, I thought how much my mother would have loved The Valerie Fund," says Josh, who lost his mother too young to cancer. And so Josh "The Matrix" had the only knockout of the Wall Street Boxing event and raised \$50,000 for The Valerie Fund kids.

In 2011, he proposed harnessing the generosity of Wall Street to create a men's night fundraiser for 100 guys to donate \$1,000 each. But Sharon knew including both men and women could have a larger impact, so the Weintraubs created a committee of friends and colleagues who reached out to their social networks and Wall Street corporate partners and the first "A Taste of Giving" event was held in February 2012. The event raised \$250,000 that first year. The co-host committee members have embraced The Valerie Fund personally, and work hard to ensure its success year after year.

In the midst of the pandemic, on March 4, 2021, "Taste of Giving" guests accustomed to a stunning gourmet event at the Mandarin Oriental in New York City joined the 10th annual event enthusiastically from their couches and dinner tables. They participated generously from their coronavirus cocoons and broke their previous fundraising record for a total of more than \$1.1 million.

A full decade since its beginning, the Weintraubs tell us, "We're so proud of what our co-host committee has accomplished for The Valerie Fund kids. Everything we do together is for the kids."



## The Markovitz Family creates a legacy for The Valerie Fund children



Marilyn and Monroe Markovitz want to leave a permanent impact on their community. “We want to leave some evidence that we were here on this earth,” reflected Monroe, as he neared his 90th birthday. That’s precisely what the Markovitz family is doing by establishing the Marilyn & Monroe Markovitz Child Life Specialist, a permanent position at The Valerie Fund Children’s Center at Newark Beth Israel Medical Center, the same hospital where Marilyn Markovitz was born 87 years ago.

“I feel strongly that when people have enough, they should want to give back. I would even go so far as to say it is mandatory. This is a philosophy that was transmitted to us, which our sons also absorbed. We are in a very fortunate position to be able to give back,” Marilyn says.

As they learned the specific types of psychosocial services offered by The Valerie Fund, the Markovitzes settled on directing a \$1.8 million gift to ensure that The Valerie Fund children will always have the guidance of a child life specialist to accompany them throughout their medical journeys.

New Jersey natives, Marilyn and Monroe raised their own four boys in Hillside while Monroe established a successful real estate business in Union. The boys, who were pivotal in establishing this new position in their parents’ name, chose to honor their parents following the sale of the family business by creating a legacy at The Valerie Fund. Marilyn learned about The Valerie Fund from a friend who is also a supporter. It was important to establish a lasting imprint on an organization that had a clear and direct impact on families in their local community.

The first person to hold the position of Marilyn and Monroe Markovitz Child Life Specialist is veteran child life specialist Jillian Hinko, CCLS, who has been at The Valerie Fund Children’s Center for over a decade.

Barry Kirschner, Executive Director of The Valerie Fund, beams when speaking about the Markovitzes and their generosity. “What a wonderful experience to meet such a generous family from our local community who wanted to understand our kids needs and then permanently support a specific program with their philanthropy. We could not be prouder.”

---

## Plangere Foundation renews support of The Valerie Fund Children’s Center at Unterberg Children’s Hospital at Monmouth Medical Center

The Jules L. Plangere, Jr. Foundation increased their generous commitment to The Valerie Fund children in 2021 with a two-year grant to support psychosocial programming. This includes the child life specialist, a pediatric social worker, and a second social worker who focuses on palliative care. The Monmouth Valerie Fund Children’s Center is currently the only Center to have this specialization.

Located in Monmouth County, the foundation seeks to support organizations with a local impact. Says the Plangere Foundation’s Donna Hession, “The Plangere Foundation proudly supports the community and the children being treated at The Valerie Fund Children’s Center at Monmouth Medical Center.”

# Our Valerie Fund community rallies again in 2021

**The Second Annual Kids Ice Cancer All-Star Hockey Game** was held June 16th at Mennen Sports Arena in Morristown. High school senior **Andrew Low**, the creator of **Kids Ice Cancer**, has worked to support cancer organizations since losing three family members to cancer in 2016. He recruited friends and other high school hockey players, adopting “Kids Helping Kids” as the organization’s tag line. After visiting The Valerie Fund Center at Morristown, which he described as a “real eye opener,” Andrew added The Valerie Fund to the list of organizations for Kids Ice Cancer to support. They have raised over \$190,000 in just the past two years.

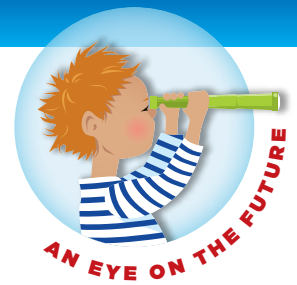


**The 16th Annual Valerie Fund Walk and 5K Presented by Ed & Sue Goldstein and JAG-ONE Physical Therapy** was held on September 25th. Over 1,000 walkers and runners attended, and over \$800,000 was raised. We are so appreciative of our loyal sponsors, including exclusive event sponsor JAG-ONE Physical Therapy, our Founders Ed & Sue Goldstein, and media sponsor CBS 2 New York with broadcasters, John Elliott and Vanessa Murdock. Our thanks to **RWJBarnabas Health, Atlantic Health System’s Morristown Medical Center, Saker ShopRites, Dunkin’ Joy in Childhood Foundation, Servier Pharmaceuticals, Merck & Co., Bristol Myers Squibb, West Deptford Energy, St. Joseph’s Health Foundation, CBOE Global Markets, Inserra Supermarkets, and Northeast Risk Solutions.** Jemima, diagnosed with Stage 4 rhabdomyosarcoma at age 21, joined us on stage. Conor also joined us, speaking about his experience of being diagnosed at age 17 with Pre-B Acute Lymphoblastic Leukemia.

For more than two decades, Steve Squeri, Chairman and CEO of American Express, has been an integral part of the success of the annual **American Express Charity Golf Tournament** held at Baltusrol Golf Club. This event has raised millions of dollars, including \$407,000 this year. The evening’s guest speaker was Brianna, Valerie Fund patient and near 15-year survivor. A recent graduate of the University of Miami, Brianna was a four-year recipient of a Valerie Fund scholarship. Steve took great pride in introducing Brianna as a patient advocate, congressional lobbyist, and public speaker in the pediatric cancer community as well as a colleague, since she joined American Express last year as an analyst. Special thanks to American Express and to major sponsors **Ethel and Joel Sharenow, Dell Technologies, ShopRite of Lincoln Park, Tom and Linda Held, Inserra Supermarkets, JDP Mechanical, and UM Worldwide.**

**The 24th Annual Burger King Children’s Charity Golf Classic** took place on September 28th at Brooklake Country Club. This year’s honoree was our newest board member, Chris Johnson. Chris currently serves as the CEO of Rackson Restaurants. Since 2017, his restaurants have participated in The Valerie Fund’s Annual Burger King Coupon Campaign, raising over \$100,000 in the last five years. The Burger King Children’s Charity Golf Classic is made possible by our generous sponsors New Providence Dentistry, CocaCola of North America, Keurig Dr. Pepper, Alfiero & Lucia Palestroni Foundation, Devs Food, Bimbo Bakehouse Foodservice and Darling Ingredients.





**The Annual CAREoke for the Kids** was back in person this year on October 19th at Gramercy Theater, raising over \$270,000. Thanks to our fabulous MCs Pat Brennan and Cara Lewis, both in-person and virtual attendees could feel the electric energy generated by our performers. This year, VideoAmp took home the coveted trophy with their performance of Misery by Paramore. Without the support we receive yearly from our New York advertising community, we would not be able to continue this entertaining and successful event. A special shout out to our Platinum Sponsors: Amazon Ads, Innovid, Vevo, VideoAmp, and Warner Media.

On November 19th, 500 friends of The Valerie Fund gathered to honor Tina Squeri and our own board member Steve Squeri at our **30th Annual Thanksgiving Ball Gala**. This was the most successful Thanksgiving Ball ever as we raised more than \$3.8 million to support over 6,000 children treated at our seven centers every year. This year our ambassadors shared their experiences on video, keeping everyone as safe as possible. Their touching stories underscored the importance of the work being done every day by all The Valerie Fund psychosocial clinicians. Our MC was Shariah, a 15-year-old Valerie Fund cancer survivor who is two years cancer free. She spoke of how The Valerie Fund provided her family with everything they needed to move forward through her treatment, including a special thank you to her educational liaison who arranged for teachers to come to her house. We were also joined by River, who traveled from the Berklee College of Music in Boston and delighted the crowd by singing and playing "What a Wonderful World" on the piano. River is a proud Valerie Fund scholarship recipient.



# A model of comprehensive healthcare and program breakdown

## 2 YEAR FINANCIAL SUMMARY

REVENUE	2020	2021
Grants & Donations	\$2,579,381	\$2,757,554
Special Events (Net)	1,690,676	5,219,682
Investment Income	539,461	630,652
<b>TOTAL REVENUE</b>	<b>\$4,809,518</b>	<b>\$8,607,888</b>
EXPENSES		
Program Services		
Hospital Centers	\$3,095,524	\$3,038,050
Camps	152,836	84,952
Advocacy	735,921	718,939
<b>Total Program Services</b>	<b>\$3,984,281</b>	<b>\$3,842,391</b>
Support Services		
Management and General	\$124,886	\$138,303
Fundraising	685,338	758,965
<b>Total Support Services</b>	<b>\$810,224</b>	<b>\$897,268</b>
<b>TOTAL EXPENSES</b>	<b>\$4,794,505</b>	<b>\$4,739,659</b>
CHANGE IN NET ASSETS	\$15,013	\$3,868,229

Unaudited 2021 Results



**\$1,498,100** Child Life Specialists, Oncology Social Workers, Hematology Social Workers, Palliative Care Social Worker, Psychosocial Nursing Support, Art Therapy

**\$473,147** Integrative Medicine Practitioners, Acupuncturists, Palliative Care Nurse Practitioner, Nutritionist

**\$468,680** Psychologists/Neuropsychologists

**\$406,500** Scholarships

**\$373,040** Educational Liaisons

**\$233,744** Emergency support, holiday meals and gifts, etc.

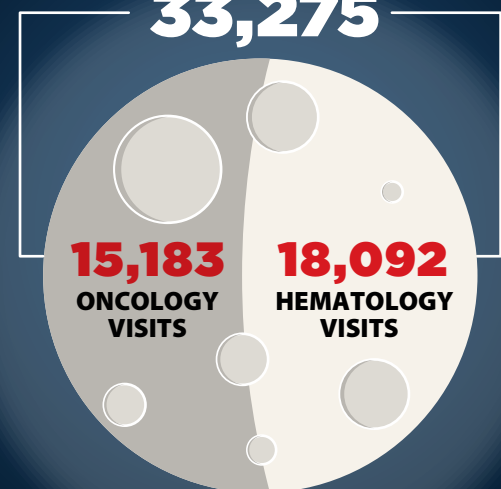
**\$189,580** Cancer Survivorship Program

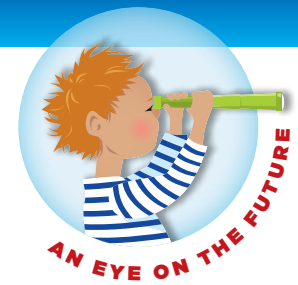
**\$126,000** Research Coordinators

**\$92,800** Camp Happy Times for children with cancer

Total patient visits to The Valerie Fund Children's Centers:

**33,275**





# 2021 Honor Roll

## VALERIE'S LEGACY

**Members of Valerie's Legacy are donors who have named The Valerie Fund in their estate plan or have made a gift to The Valerie Fund endowment. We recognize these donors in perpetuity for ensuring that the children we serve now and in the future receive the care and support that they deserve.**

- \* Judy Abrams  
Marilyn Adler/Martin H. Adler Children's Fund  
Paul Bagoon and Family
- \* Merrie and Eric Bernstein
- \* David and Gail Cohen
- \* E. F. Harris Family Foundation
- \* George and Fran Foussianes
- \* Michael and Debra Gelband
- \* Ed and Sue Goldstein
- \* Estate of Helen Grace  
The Kapnick Foundation
- \* Janet Keating  
Lisa's Heart Kids Cancer Research, Inc.
- \* The Markovitz Family
- \* Krista McKerracher and Michael McCabe
- \* David and Jane Novak  
Lauryn Pepe
- \* Bill and Heather Raincsuk  
The Raine Group
- \* Glenn and Stacy Schiffman
- \* Joel and Ethel Sharenow  
Jon and Abby Winkelried

## VALERIE'S CIRCLE (\$100,000+)

- \* American Express  
\* Brendan and Jenifer Garvey
- \* Ed and Sue Goldstein  
\* Jules L. Plangere, Jr. Family Foundation
- \* David and Jane Novak  
\* Joel and Ethel Sharenow
- \* Stephen and Tina Squeri  
\* Victor & Clara Battin Foundation
- \* Josh and Sharon Weintraub
- \* Dr. Diane Young and Philip Crowley

## LEADER (\$50,000+)

- Anonymous  
AT&T  
Alexander Benjamin and Sheila Peluso
- \* Merrie and Eric Bernstein  
\* Daniel Choquette  
Dell Technologies  
Delta Air Lines  
Fiserv  
Goldman Sachs & Co.
- \* Healthcare Foundation of New Jersey, Inc.  
Margaret and Robert Walter Foundation  
The O'Hara Family Foundation  
Salesforce

## PHILANTHROPIST (\$25,000+)

- Adobe  
Afiniti  
Alliance Data
- \* Atlantic Health System  
Ed Bastian
- \* Sanford Bier
- \* Big G Charitable Foundation Corp  
The Boston Consulting Group  
CHANEL

\* Indicates Champions Circle lifetime giving level.  
• Indicates a Green Light Initiative donor.

- Chatham Asset Management  
Kenneth and Kathryn Chenault
- \* Christine Marie Bisgrove Family Foundation  
Deloitte Services LLP  
DiFeo Auto Group  
Chaojun Fan and Kaiyan Lin
- Christine and Alan Gallo
- \* The Gelband Family Foundation  
The Harris Family Charitable Gift Fund  
Thomas and Linda Held  
Brad and Jennifer Henis  
Hi I'm Dave LLC  
Hilton  
Holman Enterprises  
\* Inserra Supermarkets, Inc.
- \* JAG-ONE Physical Therapy, LLC  
Johnson & Johnson
- Janet Keating  
Kissler & Co., Inc.  
Kyndryl/IBM  
Lazard
- \* Lowenstein Sandler LLP  
Macy's
- \* Jeffrey and Katina Mayer
- McKinsey & Company, Inc.  
Montefiore Medical Center
- \* Morgan Stanley Fixed Income & Commodities
- \* Morgan Stanley Foundation  
NBA Entertainment  
NJ Car Charles E. Walton Charitable Foundation  
Oracle Corporation  
Park Hotel and Resorts  
Paul Miller Audi  
Paypal
- \* Platkin Family Foundation  
PriceWaterhouseCoopers, LLP  
Rackson Restaurants, LLC
- Barry and Debra Rothenberg
- \* Andrew and Julie Rubinstein
- \* RWJ Barnabas Health  
Teneo Strategy  
Translation LLC  
UBS Arena - NY Arena Partners, LLC  
UM Worldwide  
Verizon

- \* Yaris Family Foundation
- \* Scott and Rachel Yedid Zenon, LLC  
\* Xingbin Zhang

## BENEFACTOR (\$10,000+)

- 1-800-Flowers.com  
Accenture LLP  
Amazon  
Ameriprise Financial  
Anonymous  
The Armour Family Foundation  
ASM Mechanical Systems  
\* Bank of America Merrill Lynch
- Robyn and Joseph Bier  
Keith and Debra Banks  
Bob Ciasulli Auto Group  
Timothy Brennan  
Bristol Myers Squibb  
Brownstone Investment Group, LLC  
Ursula Burns
- The Carpenter Family Charitable Fund  
Thomas and Judith Cash  
CBOE Global Markets  
Venkat Chary  
Peter and Peggy Cherasia  
Chevron  
Citi  
Cognizant  
Columbus Citizens Foundation, Inc.  
Comcast  
Cox Auto
- \* Creative Foods Corp.
- Joseph and Suni Cyriac  
Dechert LLP
- Matthew DeNichilo and Rachel Cecil  
Dentsu McGarry Bowen  
Devs Foods  
Donatelli Development  
Paul and Valerie Dottle  
Dover Dodge-Chrysler Jeep  
Miller and Peggy Drexler
- \* Mark Eichorn  
Energy Capital Partners  
FedEx

# Our corporate partnerships make us stronger



Chatham Wealth Management



THE GELBAND FAMILY FOUNDATION



EDWIN & SUZANN GOLDSTEIN FAMILY FOUNDATION

THE HARRIS FAMILY FOUNDATION



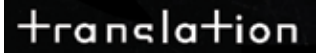
THE HELD FAMILY FOUNDATION



THE O'HARA FAMILY FOUNDATION



JULES L PLANGERE JR. FAMILY FOUNDATION



MARGARET AND ROBERT WALTER FOUNDATION



YARIS FAMILY FOUNDATION







Celia Felsher and John Cecil  
 FIS Global  
 FOX  
 Fred and Marie Weiss Foundation Fund  
 Freewheel A Comcast Company  
 The George W. Bauer Family Foundation  
 Gio Financial/EisnerAmper  
 GM Advisory Group  
 Google  
 Swati Goorha  
 Guardian  
 Daniel and Mary Hoffman  
 •Lauren, Steve, Alli and Matt Hollender  
 Hope & Heroes Children's Cancer Fund  
 IAC  
 InComm  
 Innovid  
 \*JDP Mechanical Inc.  
 Jim Curley Buick GMC Kia  
 •Jon & Abby Winkelried Foundation  
 Joy In Childhood Foundation, Inc.

JP Morgan Securities  
 Jzanus, Ltd.  
 Jacki Kelley  
 •Barry Kirschner and Beth Tepper KPMG, LLP  
 •Kronthal Family Foundation, Inc.  
 Latham & Watkins LLP  
 Theodore Leonsis  
 Lester Glenn Subaru  
 Lithia Motors Support Services, Inc.  
 •Wendy and Kevin Low  
 Ryan MacAvery  
 Mac Products, Inc.  
 Major Food Group  
 Manhattan College  
 •Jonathan Mann  
 •Daniel and Barbara Masiello  
 •Krista McKerracher and Michael McCabe  
 Mercedes-Benz of Newton  
 Merck & Co.  
 Merck Company Foundation  
 Microsoft  
 Ed Miller  
 \*Monmouth Medical Center

Morgan, Lewis & Bockius LLP  
 MSD Partners, L.P.  
 \*Mulvaney Family Foundation  
 Mutual of America  
 Financial Group  
 \*Newark Beth Israel  
 Medical Center  
 New Providence Dentistry  
 Michael and Elin Nierenberg  
 •Genghis Niver  
 \*Nomura Securities International  
 Northeast Risk Solutions  
 Novartis Oncology  
 \*Parade Enterprises, LLC  
 Tristan Cummings and Y.  
 Michelle Peterson  
 Pfizer  
 PGA Tour, Inc.  
 Pine Belt Automotive, Inc.  
 Piper Sandler  
 \*Plaza Construction, LLC  
 Red Ventures  
 \*Randy Reiff  
 \*Richards Manufacturing  
 Company  
 \*Bob Richter  
 Route 46 Chrysler Jeep  
 Dodge Ram  
 Elizabeth Rutledge  
 \*Saker ShopRites, Inc.  
 Liam and Joy Sargent  
 •Barbara Schoenberg  
 Schulte Roth & Zabel LLP  
 Schumacher Chevrolet  
 Jon and Debbie Sebiri  
 Servier Pharmaceuticals, LLC  
 Kevin Sharer  
 \*ShopRite of Lincoln Park, Inc.  
 Bippy Siegal  
 Siemens Industry, Inc.  
 Singh Family Foundation  
 Snap Inc.  
 St. Joseph's Children's Hospital  
 •\*Michael and Laura Stemmler  
 Subaru of America  
 \*Summit Luminary Fund  
 \*Mark Taylor  
 TCG  
 •William Teuber  
 TJX Foundation  
 Toscano Family Charitable Fund

U.S. Bank  
 USGA - United States Golf  
 Association  
 Vevo  
 VideoAmp  
 Lisa Wardell  
 WarnerMedia  
 The Way Family Charitable Fund  
 •Wealth Enhancement Group  
 Michael Weinstein and  
 Kirsten Weinsten  
 Wells Fargo Securities  
 West Deptford Energy  
 Holdings, LLC  
 •Alfred and Jane Wolin  
 •\*Richard Wood  
 •Yarad Family Fund

**PARTNER  
 (\$5,000+)**

Adaptive Biotechnologies  
 •Marilyn Adler  
 •\*The Alfiero and Lucia Palestroni  
 Foundation, Inc.  
 Donald and Karin Allen  
 AMC Networks  
 American Express Global Travel  
 Ralph Andretta  
 Anonymous  
 Paul Bagoon and Family  
 Baird  
 Barlow Chevrolet, Inc.  
 BET  
 Russell and Pia Binns  
 Dean and Andrea Blosberg  
 Boeing  
 Bill Borden  
 Michele Butman  
 Cadent TV  
 Thomas and Lynne Caffrey  
 Campbell Supply Company  
 •\*Ronald and Annette Carr  
 Ian Carow  
 Joseph Cassanelli  
 Robert Catell  
 Cherry Hill Imports Auto Group  
 Chevrolet of Jersey City  
 CHOP, NJ Section of Hematology/  
 Oncology, Specialty Care Ctr  
 Coca-Cola North America

Stephen and Evelyn Colbert  
 \*Comcast NBCUniversal  
 •Coughlin Midlige & Garland LLP  
 Crown Cadillac  
 Lara Danmola  
 Dell Your Cause  
 Diaco Family Foundation  
 Discovery Networks  
 DISH Media TV  
 Disney  
 •Donna T. Darrien Memorial Foundation for Sickle Cell, Inc.  
 Dr Pepper/Seven Up Inc.  
 Edison Spine Center  
 Elkins Chevrolet  
 Matthew and Debbie Ellis  
 Facebook  
 Robert and Norma Falcone  
 Ronald and Felicia Festa  
 Justin and Jaclyn Festa  
 Patrick Fleming  
 •\*George and Fran Foussianes  
 William and Angela Freda  
 •Frank and Carol Fusaro  
 James Gerace Jr  
 Global Auto Mall  
 •Goldring Family Foundation  
 Joel and Lynda Goldschein  
 William Graham  
 Robert and Julie Greenholtz  
 Valerie Greer  
 •Harvey Management Corp.  
 Hudson Hyundai and Subaru  
 Susan Huang  
 \*Investors Bank  
 iSpot TV  
 Jacksonville Jaguars, LLC  
 Jaeger Lumber  
 Dwight James  
 Jennifer Swift Fieldman  
 Foundation Fund  
 Jersey Mike's Franchise  
 Systems, Inc.  
 Raymond Joabar  
 Christopher Johnson  
 •Joy Street Foundation  
 Jonathan Kalikow  
 Kearny Bank Foundation  
 KOA Care Camps  
 Korn Ferry



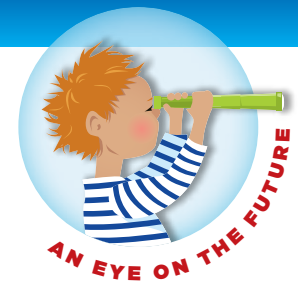
KPMG  
 Michael Kumar  
 Larson Ford Inc.  
 Blair and Georgia Lehnert  
 •Steven and Elissa Lerner  
 Lexus of Cherry Hill  
 LG Ads  
 The Linda Sue Pfarrer Nortillo  
 Charitable Foundation  
 Liveris Capital Partners  
 Jeffrey and Andrea Lomasky  
 Joseph Lombardi  
 Lucas Motor Co., Inc.  
 David MacLennan  
 Louis and Sylvie Magnan  
 •Judith Malamed and  
 Steven Miller  
 Manahawkin Chrysler Dodge  
 Jeep and Ram  
 Manahawkin Kia  
 Mandelbaum, Salsburg P.C.  
 •Stewart and Rhoda Manheim  
 The Marcus Family Foundation  
 •Carrie and Jamison Mark  
 Anna Marrs  
 Gerard ad Debbie McNamara  
 Glenda McNeal

James Mc Nerney  
 Neil Mehta and Paula  
 Cheng-Mehta  
 Microsoft Matching Gifts  
 Program  
 Thomas Milana  
 Million Dollar Round Table  
 Foundation (MDRT)  
 Jean-Pierre and Nanci Naegeli  
 NFL Ventures, LP  
 NJ Heroes  
 O'Friel Family Foundation  
 Oberland Capital  
 Samuel Palmisano  
 Pellegrino Auto Group  
 Richard Petrino  
 Precision Acura of Princeton  
 \*Quick Quality Restaurants, LLC  
 Ray Catena Motor Car Corp.  
 Mitchell Rice  
 Roku  
 RoNetco Supermarkets  
 Louis and Blair Rosenfeld  
 Randi and Jeffrey Rosen  
 RRE Ventures  
 The Ruth Kissler Warshaw  
 Memorial Foundation

RW2 Enterprises LLC  
 Henry and Jacqueline Schram  
 The Scott and Mary Farmer Fund  
 Screaming Eagle Consulting  
 Screen Vision Media  
 Seacoast Chevrolet  
 The SGMG Foundation  
 Linda and Ross Silver  
 Jennifer Skyler  
 Spotify  
 Team Toyota of Princeton  
 The Washington Post  
 The Weather Channel, Inc.  
 Thomas and Judith Cash  
 Foundation  
 Tiffany & Co.  
 Toyota of Morristown  
 Kevin Trent  
 Tubi TV  
 Twitter  
 U.S. Trust, Bank of America,  
 Private Wealth Mgmt  
 Univision Management Company  
 ViacomCBS  
 \*Village Super Markets, Inc.  
 Vizio, Inc.  
 Christopher and Cynthia Webster  
 Gregory White  
 World Auto Group  
 Yonggang Xue and Liye Zhang  
 Zefr

**FRIEND  
 (\$2,500+)**

41725 Fulton Operating Corp.  
 Dr. Maurice and Laurie Aburdene  
 Axis Global  
 Dr. Steven Bader  
 Bimbo Bakeries USA, Inc.  
 Blue Knights NJ Chapter III  
 Brogan Cadillac  
 Marco Burdi  
 Burger Brothers Restaurant  
 Group Inc.  
 Nell Butler  
 Mr. Benn Calhoun  
 Rose Cali  
 Kevin Carney  
 The Children's Hospital of  
 Philadelphia



Circle Auto Group  
 Arnold and Jaclyn Civins  
 \*David and Gail Cohen  
 Shawn Cole  
 Coleman Buick GMC Cadillac Inc.  
 Colonial Airstream  
 Combined Resources Interiors, Inc.  
 Darling Ingredients, Inc.  
 •Dominic and Karen DiBari  
 DiFeo Kia  
 Griffin Dottle  
 Douglas Motors Corp.  
 Cristina Eberle  
 Michael Ellison  
 Brad Evans  
 Jeff Festa and Daniel Seaman  
 Freehold Ford Inc.  
 •Mark and Wendy Friedmann  
 •Brian and Cynthia Fuhro  
 Future Today Inc.  
 \*Dr. John Gallucci Jr., DPT and Dawn Gallucci  
 Gateway Toyota  
 Abby and Joel Goldberg  
 James and Pendleton Gorman  
 •Rhonda Graber  
 Scott and Kelly Greenberg  
 •Jillian Griffiths  
 John Hale and Susan Batta-Hale  
 Peter Harris  
 Brian Healy  
 Stephen Hess  
 Lorraine Hirsh  
 Home Team Sports  
 David House  
 Hudson Toyota  
 Chuck Imhof  
 Johnson & Johnson Matching Gifts Program  
 •Daniel Keating  
 Robert and Pamela Kindler  
 Chuck Kohaut  
 Evan Kotsovinos  
 William Krovatin and Patricia Schiripo  
 Lisa Lanspery  
 David Lawrence  
 Ira and Ilene Lehman  
 Liberty Subaru

Lilliston Ford Inc.  
 Doug Macron and Francine Giocondo  
 Magnitude Capital  
 Manahawkin Chrysler Dodge Jeep Ram  
 Manahawkin Kia  
 Manasquan Bank Charitable Foundation  
 •Joseph and MaryAnn Mangione  
 Joshua Mann  
 Margaret McGarvey  
 Michael Mikos  
 Thomas and Dara Miles  
 Monsignor McClancy Memorial High School  
 Ron Morris  
 David and Stephanie Muldberg  
 Anthony and Gina Nigara  
 NJ Coalition of Automotive Retailers  
 NJM Insurance Group  
 Jeff Ostermiller  
 Pestone Family Foundation  
 Edward Pick  
 Pine Belt Automotive, Inc.  
 David and Jen Prael

\*William and Heather Raincsuk  
 •Scott and Erica Ricciardelli  
 Alicia Rose  
 Rossi Auto Group  
 Russo Family Foundation, Inc.  
 Teresa Sachs  
 Salerno Duane Infiniti  
 Peter Salwin  
 Peter Schancupp  
 David Scher  
 Scripps Networks  
 Gregory Sherry  
 Stacey Silva  
 •The Silver Family Foundation  
 Smythe Volvo  
 Joseph and Linda Spencer  
 Cynthia Sullivan-Goldenberg  
 Doug Tabish  
 Colleen Taylor  
 Toyota of Turnersville  
 Pat Tully  
 UPS Foundation  
 •Jeffrey Vanefsky  
 Thomas Verutes  
 Beatrice Vestberg  
 Anthony Viola

\*Wakefern Food Corporation  
 Wallstein Family Charitable Fund/  
 Robert and Freida Wallstein  
 Wawa Inc.  
 Sara Willard  
 Dashon Williford  
 Peter Wunsch  
 Annie Yaris

**ADVOCATE  
 (\$1,000+)**

1 Arbor LLC  
 A+E Networks  
 Abbie  
 Steven Abrahams  
 Jill Abrams  
 •Lori Abrams  
 Arthurs Acres  
 AIG Matching Gifts  
 Susan and Rakan Aledwan  
 All Ahead Title Agency  
 Brian Aloia  
 American Express Foundation-  
 Employee Gift Matching  
 American Laundromat Records  
 Nazish Amir-Siddiqi  
 Ampersand  
 Lydia Andre  
 Drs. Ronald and Jacqueline Angel  
 Associated Technology Inc.  
 Association of Metro New York  
 BK Franchisee, Inc.  
 Auxilior Capital Partners  
 Mohammed Badi  
 •Thomas and Maureen Baker  
 Chaucer Barnes  
 Andrew Beatty  
 Campbell Becher  
 Joseph and Ann Berkery  
 Gregory and Leslie Besner  
 Bruce and Ruth Bier  
 Eric Bischof  
 Duff and Rory Blair  
 BNE Real Estate Group  
 Andrew Boryschuk  
 Breene-Peretsman Family Fund  
 Breitman Family Foundation Inc.  
 Michael Breslin  
 Brian Trematore Plumbing &  
 Heating, Inc.



Bristol Myers Squibb Company  
 Wanda Brownridge  
 Buhler & Bitter Inc.  
 Timothy Burke  
 Terry-Ann Burrell  
 Peg and Robert Canniff  
 Douglas Caterfino  
 Chapman Ford Sales, Inc.  
 John Cheng  
 Adam Cherry  
 Sharad and Parul Chhetri  
 Children's Oncology Camping  
 Association (COCA)  
 Robert Childs  
 Trish Chuipek  
 The Clearing House  
 CMS  
 Howard and Randi Cohen  
 Ross Cohn  
 Cohn Reznick Foundation, Inc.  
 Anthony and Alice Colarusso  
 John Collins  
 •Columbia Bank Foundation  
 Contemporary Motor Cars, Inc.  
 John and Christina Cooke  
 Kenneth Cooke  
 Mark Coxson  
 Creative Financial Group  
 Crown Media Holdings, Inc.  
 Culinary Education Center  
 Evan and Allison Damast  
 Dayton Toyota  
 Elizabeth Dennis  
 The Dime Bank  
 Richard and Judy Dolinko  
 Donnelly Construction  
 Joan and Charles Doomany  
 Dorfman Abrams Music, LLC  
 Downs Ford Inc.  
 Tom Dubovich  
 Dun & Bradstreet, Inc  
 Linh Duong  
 Dawn Dursee  
 Dorothy Goldberg and  
 Donald Dvorin  
 Tom Dye  
 Andrea Dyson  
 Tina Eide  
 Robert Enticott  
 David Fabricant

Joseph and Judy Falk  
 Josephine Favetta  
 Robert and Linda Feld  
 Allison Fernandez  
 Anthony Ficarra  
 •Finkel Family Fund  
 Darren Finnie  
 Robert and Brenda Fischbein  
 •Tony and Bunny Flanders  
 Flemington BMW  
 Flower Hill Auto Body  
 Jeff Fortunato  
 Frank's GMC  
 Sara Frasher  
 Freehold Buick GMC  
 Charles and Naomi Fruchter  
 Lai Ming Fung  
 Doug and Linda Fusco  
 Patrick Gallagher  
 Susan Gammage  
 Garden State Honda  
 Robert Garinger  
 Maryclaire Garrett  
 Joan and Eileen Garry  
 Arthur and Toby Geller  
 Doug Gingerella

•Goldman Sachs Matching  
 Gifts Program  
 George and Carol Goldsworthy  
 Cecilia Gonzalo  
 Joseph Gottlieb  
 Jeffrey Greenholtz  
 Eli Gross  
 Ibolja Grosz  
 Kerry and John Hall  
 Hamilton Mazda  
 Hamilton Volkswagen  
 Peggy Hansen  
 William and Luanne Harth  
 Hartnett Family Foundation, Inc.  
 Alan and Betsy Haveson  
 Marc and Christine Hellman  
 Christopher Henry  
 Dean Henry  
 Peter and Marianne Herko  
 Jaclyn Hill  
 Daniel and Christina Hoehn  
 Jeff and Renee Hoffmeister  
 Winson Ho  
 •Craig and Andrea Horowitz  
 Hudson Auto Group

Ian and Jacqueline Hume  
 Imtech Graphics  
 Infiniti of Englewood  
 Irwin Lincoln  
 Simone James  
 Jonathan Jarrell  
 Andrew Callow and Carolyn  
 Jehle Callow  
 GERALYN D. JENKINS  
 Kenneth Jensen  
 JM Boonton LLC  
 Johnson Dodge Chrysler Jeep  
 Alan and Jill Johnson  
 Jeffrey Johnson  
 JP Morgan Chase Foundation  
 Michael Just  
 Juzefyk Bros. Construction  
 Peri and Lakshmi Kamalakar  
 Dean and Emily Kameron  
 Corinne Kampf  
 Leonard Karp  
 Robert Kashtan  
 •Stephen and Elaine Katzman  
 Patricia Kaufhold  
 Bob and Lori Kaufman  
 Aristodimos Kavour  
 Kay Burger Management, LLC  
 Craig Keany  
 Kris Kelly  
 Lyndon Keyes  
 Christopher Kim  
 Barry and Stephanie Kissler  
 Ashwin Kittur  
 Caroline Kjorlien  
 KKR - MP Charitable Gift Fund  
 Drew Krichman  
 Joel and Rhea Kriegsfeld  
 Norman and Rhoda Krueger  
 Kundert Volvo Cars  
 L&M Air Inc.  
 Lakeland Bank  
 Sue Lawrence  
 Jane Lee  
 Lee Law Firm LLC  
 James and Linda Leth  
 Local Smoke BBQ  
 Lombardi & Lombardi  
 MaryAnn Lordi  
 John Lucich  
 Scott and Robyn Mack





Macondo Networks  
 Bruce Mactas  
 Madison Insurance Group  
 Magnite  
 Mahon Landscaping, Inc.  
 Nora Mann  
 Todd Manning  
 Cristina Masiello  
 Daniel Masiello  
 Renee Massaro  
 James Mastakas  
 Mazars USA LLP  
 Chris McBurney  
 Eileen McCarthy  
 Thomas and Rosanna McCauley  
 Erin McDermid  
 Gavin McFarland  
 McGuire Auto Group  
 McGuire Cadillac Inc.  
 Maryellen McLaughlin  
 McMullen Family Foundation  
 Medco Plumbing  
 Mega Burgers Corporation  
 Mercedes-Benz of Princeton  
 Guy and Lisa Metcalfe  
 Michael and Jo Anne Rubin  
 Charitable Gift Fund  
 Micro Graphic Information  
 Services, Inc.  
 Miller Ford  
 Omar Minaya  
 Molly Jean Shuttleworth  
 Ferguson Fund for  
 Cancer Research  
 Montclair Rejuvenation Center  
 Christian Montesi  
 Karen Morris  
 Loretta and Neil Morrison  
 Tenjiwe Mortensen  
 Jennifer Mulcahy  
 Madhav Murali  
 Ajay Nagpal  
 New Jersey Legal Industry  
 Providers  
 Nexstar Media Group, Inc.  
 The Niva & Heeten Doshi  
 Foundation  
 Karen Norton  
 Lee O'Connor  
 Lisa and Brian O'Leary  
 Ocean First Foundation



OptumRx, Inc.  
 Outside Television  
 Gerard Papetti  
 Parkview Plumbing &  
 Heating Inc.  
 Pawan Passi  
 Passion 4 People Consulting LLC  
 Patel Brothers  
 Tejash Patel  
 Richard and Natalie Peck  
 Pfizer Foundation Matching Gifts  
 Pillari Bros Construction Corp  
 PIP Printing  
 •Steven and Kathy Plump  
 Polevoy Family Foundation  
 Robert and Jane Poznak  
 Premier Energy Group, LLC  
 Prestige Subaru  
 •PSE&G  
 The Kevin & Jane Quinn Family  
 Fund  
 Vasudevan Ramanujam  
 Ramsey Chrysler Jeep Dodge  
 Ram  
 Ramsey Fiat Alfa Romeo

Ramsey Infiniti  
 Ramsey Mazda  
 Ramsey Nissan  
 Ramsey Subaru  
 Ramsey Volvo  
 Najma Rana  
 Lawrence and Susan Rascio  
 •Evan and Susan Ratner  
 John Ratzan  
 RDQ Economics  
 Benjamin Rehberg  
 Stuart and Nicole Reisman  
 Barry and Helen Reiter  
 Trista Ricciardelli  
 Sam Rice  
 Dr. Daniel and Beth Richmond  
 R Imperium  
 Lori Rizzo  
 The Robert and Marilyn Friedson  
 Foundation  
 Fred and Helen Roberts  
 Kristen Rossi  
 •\*Steven and Nancy Roth  
 Rt. 18 Chrysler Jeep Dodge Ram  
 Michael and Jo Anne Rubin

William and Sheryl Rubinstein  
 Ruth Silverman-Rosenbloom &  
 Victor H. Rosenbloom Charitable  
 Foundation  
 John Ryding and Nancy  
 Northrop  
 Pammela Savage  
 Joseph Schneider  
 Jon and Judith Schoeler  
 Schwartz Mazda  
 Lauren Schweitzer  
 Vincent Scordley  
 Sea View Jeep  
 Seigel Law, LLC  
 Selma and Raymond Kramer  
 Foundation, Inc.  
 Seton Hall Preparatory School  
 Kimberly Sgro  
 Marvin and Hazel Shanken  
 Floyd and Iris Shapiro  
 Adam and Mary Shepard  
 Short Hills Surgery Center  
 Craig Silliman  
 Camilla and Per Sivertsson  
 Smith Motor Co., Inc.  
 Elliott and Marianne Solomon  
 Sompo International  
 •Frank and Julianne Sowinski  
 Bess Spaeth  
 Lynette Spinella  
 John Standing  
 Robert and Krystyna Steiger  
 Steve Stella  
 •Louis and Linda Stellato  
 Morris and Ronnie Stern  
 Peter and Meredith Stoma  
 Nancy Stone  
 Carter Strauss  
 David Strauss  
 Streaks Wrestling Club  
 Will Stredwick  
 Steven Teitelbaum  
 Trenk Isabel P.C.  
 Michael Trombetta  
 Michael and Susan Turk  
 TV One  
 •\*Joseph Uva  
 •J.C. Uva  
 Vanguard Dealer Services  
 Bari and Evelyne Venetsky

Daniela Verdugo  
 Brian Vescio  
 Volvo Cars Manasquan  
 Patricia Von Seckendorff  
 Jennifer Wadeyka  
 Christine Waldron  
 William Walenczyk  
 Michelle Wang  
 David Waring  
 Stephen and Swati Warren  
 Wayne Ford  
 Wayne Motors, Inc.  
 Brett Weinhouse  
 Rebecca and Matthew Weinstein  
 Seth Weintraub  
 Westfield Service League  
 Josh Weston  
 Kerri Whelan  
 Bradley Whitman  
 Wholesale Auto Supply Co., Inc.  
 Jen Widerstrom  
 Neil Wilcox  
 Chris Williams  
 Marisa Williams  
 Gail and Ralph Willner-Giwerz  
 Robert and Suzanne Woertz  
 Jacky Wong

Maria Woodbury  
 World Insurance Associates, LLC  
 •Worldwide Wholesale  
 Floor Coverings  
 Allison and Robert Wright  
 John and Kathleen Young  
 Samantha Young  
 Jonathan and Nancy Yourkoski  
 Gary and Socorro Yusko  
 Peter Zaki  
 Leila Zengel  
 Jane Zevon and Joseph  
 Schneider  
 Jie Zhu  
 Edward and Betsy Zimmerman  
 Scott and Beth Zucker

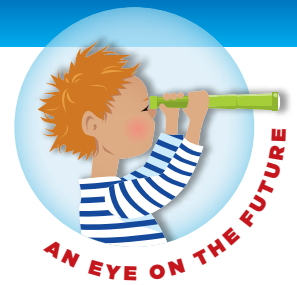
**GIFTS WERE MADE IN  
 HONOR/MEMORY OF**

Andrea Abrantes  
 Dora Aldana  
 Mark D. Allegretti  
 Joyce, Anne and Gail Arrighi  
 Stephen Arthur  
 Stan & Jean Beck  
 Merrie R. Bernstein  
 Joan Bick

Bruce J. Bier  
 Isabella Binns  
 Beatrice Blau  
 Marcella Borgenicht  
 Dorothy Bray  
 Sean Carhart  
 Theresa Chiappa  
 Will Cody  
 Jennifer Marquez Contuzzi  
 Coughlin, Midlige and Garland  
 Mark Stoford Coxson  
 Yerachmiel Daniel  
 Allan Shea Dayton  
 Will DeGregorio  
 DeLong Grandchildren  
 Eli Diringier  
 Erin Donnelly  
 Joseph and Catherine Doyle  
 Barbara Drake  
 Ira F. Ehrenkranz  
 Jack Farina  
 Nick Farina  
 Millie Finkel  
 Emily Fischer  
 Joan Fischer  
 Anna Catherine Fitzpatrick  
 Rich and Eileen Gefell  
 Brianna Gelband  
 Elaine Geller  
 Joseph Gemmell  
 George Glick  
 Ed and Sue Goldstein  
 Ed C. Goldstein  
 Rhonda Linnett Graber  
 Megan Gray  
 Harriet Greenholtz  
 Aidan Harrington  
 John Harrison  
 Allison Harth  
 Bill & Luann Harth  
 Alan Hodes  
 Frank Hotz  
 Vanessa Hull  
 Anthony Ingrassia  
 Alfred Jago  
 Alfred & Helen Jago  
 Helen Rita Jago  
 Sandra Johnson  
 Genevieve Johnston  
 Isabelle Jordan

Christopher Stephen Juliano  
 Ronnie Karmitz  
 Alex Kaufman  
 Carol Killingsworth  
 Barry Kirschner  
 Barry and Glenn Kissler  
 Christopher Krackowiecki  
 Margaret Ann Kupris  
 Matilda Kurzynski  
 Allison M. Lacey  
 Landry Family  
 Trinity Landry  
 Tristan and Trinity Landry  
 Marilyn Cecelia Larkin  
 Leslie Lavinthal  
 Terry Lehman  
 Emma Levenson  
 Sylvia Livingston  
 Gwendolyn Lukasavage  
 Jeff MacAvery  
 Tim & Jeff MacAvery  
 Tricia Maio  
 Bruce E. Marich  
 Rose M. Matt  
 Ryan Stuart McCormick  
 Abigail Mehring  
 Kathleen Minichini  
 Roseann Morgan  
 Pamela Mullen  
 Nicholas Nazzarese  
 Brianna Nielsen  
 Juliet Nigara  
 Sarah Osterkorn  
 Joseph Parlacoski  
 Richard Peck  
 Jemima Philippe  
 Jordan Plauschinat  
 David Plotkin  
 Scott Powell  
 Colin Prael  
 Kristen A. Prisco  
 Sabatino Pugliese  
 Amanda Quinichett  
 Leo Rando  
 Jared Rascio  
 Mary Rohr  
 Andrew and Julie Rubinstein  
 Anna Savarese  
 Michael Savare  
 Richard Savare





Dean Schoch  
 Connie Schofield  
 Kathryn O. Schulien  
 Evelyn Schwartz  
 Sue Simon  
 Nyla Slater  
 Emma Smith  
 Nicholas Soto  
 Joann C. Spera  
 Shawn Spickert-Fulton  
 Stephen and Tina Squeri  
 Shifra Hoffman Srolovitz  
 Tom Standing  
 Gianna Torgrimsen  
 Juanita Triado  
 Tommy Tripodi  
 Maggie Ullrich  
 Fritzi Umrath  
 Ralph Vicidomini  
 Robert Wallstein  
 Sandra Walters  
 Alva O. Way  
 Nicholas David Wihlborg  
 Jonathan Colby Williams  
 Neil M. Yaris  
 Alfred H. Young III  
 Diane C. Young  
 Diane Young and Phil Crowley  
 Arnie Zahn  
 Maturhani Zalim

### GIFT IN KIND

American Princess Cruises  
 Anonymous  
 Best Provision Co., Inc.  
 Beyond the Plate Food Tours  
 Bimbo Bakeries USA, Inc.  
 Bloomingdale's  
 Nicole Boretz  
 Bougie Bakes  
 Broadway.com  
 Brooks Brothers  
 Cancer Kids First North Jersey  
 CHANEL  
 Children's Museum of Manhattan  
 Christian Dior  
 Community Outreach Program  
 for OLMC

Comprehensive  
 Orthopaedics, P.A.  
 Crayola Experience  
 Daniels Group  
 David Yurman Boutique  
 Dunkin' Donuts  
 Eight Hills Caterers  
 Eppes Essen of Livingston  
 ERCO Lighting  
 Eyechic  
 Fitness Knocking  
 Melanie Friedmann  
 Friends of Johnny Deluisi  
 Harvey Management Corp.  
 Herr Foods, Inc  
 Holt Machinery Company  
 Jersey Mike's Subs  
 Steve Katzman  
 Andrea Lacotte  
 Lafayette 148 Boutique  
 Gretchen Lerach  
 Live Oak Landscape  
 Max Mara

Metropolitan Seafood Gourmet  
 Milton Avenue School  
 Modern Acupuncture  
 Nancy & David Fine Jewels  
 North America Tour Hub  
 North Central Jersey Association  
 of Realtors  
 North Central Jersey Association  
 of Realtors  
 Parlour Studio 17  
 Polar Bear Grand Tour  
 Salem Drive Elementary School  
 Salvatore Ferragamo  
 The Shannon Rose  
 Shop Rite Village Supermarkets  
 Sandra Sicular  
 Lauren Silvera  
 SoJo Spa Club  
 Nicholas, Mathew, and  
 Jack Spagnoletti  
 Olivia Spiridigliozzi  
 Tina and Stephen Squeri  
 Taylor Products, Inc.

Tiffany & Co.  
 Tory Burch  
 Trattoria Mediterranea  
 The UPS Store  
 Melissa Vechhiarelli  
 Wakefern Food Corporation  
 Shakeema Watson  
 Williams Sonoma

### MEDIA PARTNERS

Asbury Park Press  
 Clear Channel Outdoor  
 Comcast  
 FOX  
 Hulu  
 Interstate Outdoor  
 Ion  
 New York Times  
 OUTFRONT Media  
 Warner Media  
 WCBS Newsradio 880  
 WCBS – TV

### PHOTOS

#### Cover:

**Anderson**, age 5  
 diagnosis ALL

#### Inside cover:

Supplied by CHOP:

#### Page 1:

**Neil** and **Barry** with **Gavin**,  
**Liam** and **Myles**

#### Page 2:

**Dara** with **Asaya**, age 10  
 diagnosis IPEX syndrome

#### Page 3:

**Dean**, age 5  
 diagnosis ALL,  
**Colin**, age 19  
 diagnosis Pre Bcell ALL PH+  
**Shyann**, age 8  
 diagnosis Neuroblastoma

#### Page 5:

**Giancarlo**, age 19  
 diagnosis Medulloblastoma  
**Kayla**, age 21  
 diagnosis Sickle Cell

#### Carter

age 20  
 diagnosis Sickle Cell Disease,  
**Maria**, age 20  
 diagnosis Hodgkin Lymphoma

#### Page 6:

**Dr. Halpern** with TVF patient  
**Zippy** and **Maureen Baker**

#### Page 7:

**Ed** and **Susan Goldstein** with  
**Steve** and **Tina Squeri**  
**Rosario Dawson** with **Owen**,  
 age 4, diagnosis B- cell ALL, **Zoe**,  
 age 8, diagnosis ALL, and **Leah**,  
 age 10, diagnosis Sickle Cell  
 Disease

#### Page 8:

Co-Hosts and ambassadors of  
 Taste of Giving

#### Page 9:

**Marilyn** and **Monroe**  
**Markovitz**

#### Page 10:

Kids Ice Cancer, **Audrey**, **Jude**,  
 and **Gianna** at The Walk, and  
**Chris Johnson**, Burger King  
 Golf honoree

#### Page 11:

Videoamp winning team,  
**Tina** and **Steve Squeri**,  
 honorees at The Thanksgiving  
 Ball Gala

#### Page 12:

**Liam**, page 9  
 diagnosis ALL

#### Page 15:

**Nuala**, age 5  
 diagnosis B-Cell ALL

#### Page 16:

**Liam** and his sister

#### Page 17:

**Connor**, age 17  
 diagnosis Precursor-B ALL and  
 his mom

#### Page 18:

**Anderson** and his family

#### Page 19:

**Zoe**, age 9  
 diagnosis ALL

#### Page 20:

**Gwen**, age 16  
 diagnosed with Myelodysplastic  
 Syndrome and her dad

OUR PROGRAM LOCATIONS

## THE VALERIE FUND CHILDREN'S CENTERS & CAMP

- Children's Hospital of New Jersey at Newark Beth Israel Medical Center, Newark, NJ
- Children's Hospital of Philadelphia, New Jersey Section of Hematology/Oncology, Specialty Care Center, Voorhees, NJ
- Morristown Medical Center, Goryeb Children's Hospital, Morristown, NJ
- New York-Presbyterian, Morgan Stanley Children's Hospital, Columbia University Medical Center, New York, NY
- Overlook Medical Center, Summit, NJ
- The Unterberg Children's Hospital at Monmouth Medical Center, Long Branch, NJ
- St. Joseph's Children's Hospital, Paterson, NJ
- Camp Happy Times, Tyler Hill, PA



2101 Millburn Avenue  
Maplewood, NJ 07040  
973-761-0422

[TheValerieFund.org](http://TheValerieFund.org)

